

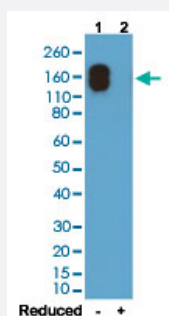
RecomAb™

# Mouse IgG2a (kappa) monoclonal antibody, clone RM107

Catalog # MAB12767

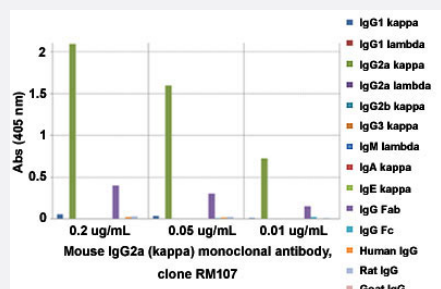
Size 100 ug

## Applications



### Western Blot

Western blot analysis of Lane 1: nonreduced (-) and Lane 2: reduced (+) mouse IgG2a (kappa) (20 ng/lane) with Mouse IgG2a (kappa) monoclonal antibody, clone RM107 (Cat # MAB12767) under 0.2 ug/mL working concentration. This antibody only reacts to nonreduced mouse IgG2a (kappa).



### Enzyme-linked Immunoabsorbent Assay

ELISA analysis of Mouse IgG2a (kappa) monoclonal antibody, clone RM107 (Cat # MAB12767) at the following concentrations: 0.2 ug/mL, 0.05 ug/mL, and 0.01 ug/mL. The plate was coated with 50 ng/well of different immunoglobulins and the result shows this antibody reacts to the Fab region of mouse IgG2a (kappa); no cross reactivity with IgG2a (lambda), IgG1, IgG3, IgM, IgA, IgE, human IgG, rat IgG, or goat IgG. An alkaline phosphatase conjugated anti-rabbit IgG as the secondary antibody.

### Enzyme-linked Immunoabsorbent Assay

A titer ELISA of mouse IgG2ak. The plate was coated with different amounts of mouse IgG2ak. A serial dilution of Mouse IgG2a (kappa) monoclonal antibody, clone RM107 (Cat# MAB12767) was used as the primary antibody. An alkaline phosphatase conjugated anti-rabbit IgG as the secondary antibody.

## Specification

### Product Description

Rabbit recombinant monoclonal antibody raised against mouse IgG2a (kappa).

<b>Antibody Species</b>	Rabbit
<b>Immunogen</b>	Original antibody is raised against mouse IgG.
<b>Sequence</b>	N/A
<b>Reactivity</b>	Mouse
<b>Specificity</b>	This antibody reacts to the Fab region of mouse IgG2a. No cross reactivity with mouse IgG2a, IgG1, IgG3, IgM, IgA, IgE, human IgG, rat IgG, or goat IgG.
<b>Form</b>	Liquid
<b>Purification</b>	Protein A affinity purification
<b>Isotype</b>	IgG
<b>Recommend Usage</b>	ELISA (0.005 - 0.2 ug/mL) Flow Cytometry Immunocytochemistry (0.5 - 2 ug/mL) Immunohistochemistry (0.5 - 2 ug/mL) Immunoprecipitation Western Blot (0.1 - 0.5 ug/mL) The optimal working dilution should be determined by the end user.
<b>Storage Buffer</b>	In PBS (50% glycerol, 1% BSA, 0.09% sodium azide)
<b>Storage Instruction</b>	Store at -20°C. Aliquot to avoid repeated freezing and thawing.
<b>Note</b>	This product contains sodium azide: a POISONOUS AND HAZARDOUS SUBSTANCE which should be handled by trained staff only.

## Applications

- Western Blot

Western blot analysis of Lane 1: nonreduced (-) and Lane 2: reduced (+) mouse IgG2a (kappa) (20 ng/lane) with Mouse IgG2a (kappa) monoclonal antibody, clone RM107 (Cat # MAB12767) under 0.2 ug/mL working concentration. This antibody only reacts to nonreduced mouse IgG2a (kappa).

- Immunohistochemistry

- Immunocytochemistry

- Immunoprecipitation

- Enzyme-linked Immunoabsorbent Assay

ELISA analysis of Mouse IgG2a (kappa) monoclonal antibody, clone RM107 (Cat # MAB12767) at the following concentrations: 0.2 ug/mL, 0.05 ug/mL, and 0.01 ug/mL. The plate was coated with 50 ng/well of different immunoglobulins and the result shows this antibody reacts to the Fab region of mouse IgG2a (kappa); no cross reactivity with IgG2a (lambda), IgG1, IgG3, IgM, IgA, IgE, human IgG, rat IgG, or goat IgG. An alkaline phosphatase conjugated anti-rabbit IgG as the secondary antibody.

- Enzyme-linked Immunoabsorbent Assay

A titer ELISA of mouse IgG2ak. The plate was coated with different amounts of mouse IgG2ak. A serial dilution of Mouse IgG2a (kappa) monoclonal antibody, clone RM107 (Cat# MAB12767) was used as the primary antibody. An alkaline phosphatase conjugated anti- rabbit IgG as the secondary antibody.

- Flow Cytometry

## Gene Info — Igh-1a

Entrez GeneID	<a href="#">380793</a>
---------------	------------------------

Protein Accession#	<a href="#">P01863</a>
--------------------	------------------------

Gene Name	Igh-1a
-----------	--------

Gene Alias	1810060O09Rik, IGHG2A, Igh-1, MGC102662, MGC118125, MGC18977
------------	--

Gene Description	immunoglobulin heavy chain 1a (serum IgG2a)
------------------	---

Gene Ontology	<a href="#">Hyperlink</a>
---------------	---------------------------

Other Designations	-
--------------------	---