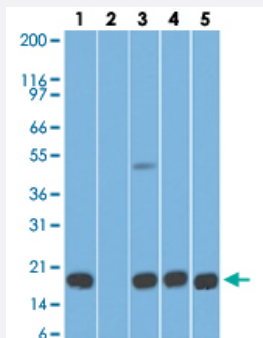


AGR2 monoclonal antibody, clone IMG10E2

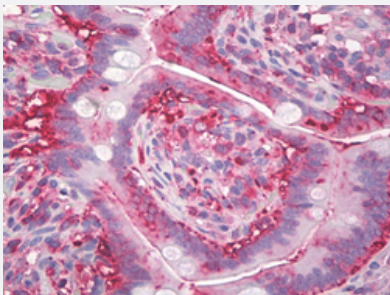
Catalog # MAB12751 Size 50 ug

Applications



Western Blot

Western blot analysis of Lane 1: human stomach tissue lysate in the absence of immunizing peptide, Lane 2: human stomach tissue lysate in the presence of immunizing peptide, Lane 3: mouse stomach tissue lysate, Lane 4: rat stomach tissue lysate and Lane 5: HCT-116 cell lysate with AGR2 monoclonal antibody, clone IMG10E2 (Cat # MAB12751) at 5 ug/mL working concentration.



Immunohistochemistry (Formalin/PFA-fixed paraffin-embedded sections)

Immunohistochemical staining (Formalin-fixed paraffin-embedded sections) of human small intestine with AGR2 monoclonal antibody, clone IMG10E2 (Cat # MAB12751) at 10 ug/mL working concentration.

Specification

Product Description	Mouse monoclonal antibody raised against human AGR2.
Immunogen	A synthetic peptide corresponding to amino acids 50-100 of human AGR2.
Host	Mouse
Reactivity	Human, Mouse
Form	Liquid
Purification	Protein G purification
Isotype	IgG1, kappa

Recommend Usage	Immunohistochemistry (Formalin/PFA-fixed paraffin-embedded sections) (10 ug/mL) Western Blot (4-6 ug/mL) The optimal working dilution should be determined by the end user.
Storage Buffer	In PBS (0.05% BSA, 0.05% sodium azide).
Storage Instruction	Store at 4°C. For long term storage store at -20°C. Aliquot to avoid repeated freezing and thawing.
Note	This product contains sodium azide: a POISONOUS AND HAZARDOUS SUBSTANCE which should be handled by trained staff only.

Applications

- Western Blot

Western blot analysis of Lane 1: human stomach tissue lysate in the absence of immunizing peptide, Lane 2: human stomach tissue lysate in the presence of immunizing peptide, Lane 3: mouse stomach tissue lysate, Lane 4: rat stomach tissue lysate and Lane 5: HCT-116 cell lysate with AGR2 monoclonal antibody, clone IMG10E2 (Cat # MAB12751) at 5 ug/mL working concentration.

- Immunohistochemistry (Formalin/PFA-fixed paraffin-embedded sections)

Immunohistochemical staining (Formalin-fixed paraffin-embedded sections) of human small intestine with AGR2 monoclonal antibody, clone IMG10E2 (Cat # MAB12751) at 10 ug/mL working concentration.

Gene Info — AGR2

Entrez GeneID	10551
Gene Name	AGR2
Gene Alias	AG2, GOB-4, HAG-2, XAG-2
Gene Description	anterior gradient homolog 2 (Xenopus laevis)
Omim ID	606358
Gene Ontology	Hyperlink
Other Designations	anterior gradient 2 homolog secreted cement gland homolog

Disease

- [Colitis](#)

- [Crohn Disease](#)
- [Genetic Predisposition to Disease](#)
- [Inflammatory Bowel Diseases](#)