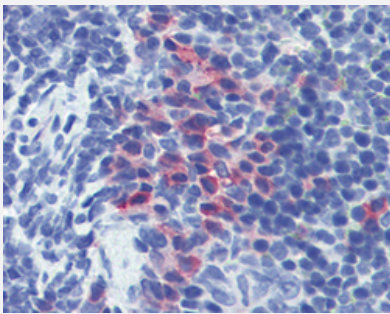


# Itgam monoclonal antibody, clone M1/70.15

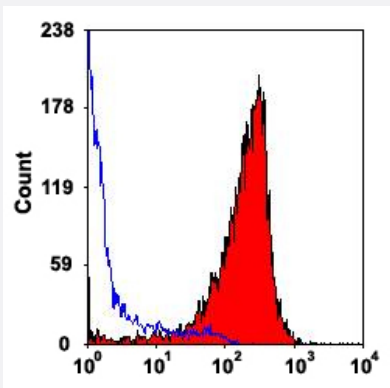
Catalog # MAB12598      Size 50 ug

## Applications



### Immunohistochemistry (Formalin/PFA-fixed paraffin-embedded sections)

Immunohistochemical staining (Formalin-fixed paraffin-embedded sections) of mouse spleen with Itgam monoclonal antibody, clone M1/70.15 (Cat # MAB12598) at 10 ug/mL working concentration.



### Flow Cytometry

Flow cytometric analysis of mouse peritoneal macrophage with Itgam monoclonal antibody, clone M1/70.15 (Cat # MAB12598).

## Specification

Product Description	Rat monoclonal antibody raised against mouse Itgam.
Immunogen	T cell enriched splenocytes from B10 mice.
Host	Rat
Reactivity	Mouse
Form	Liquid
Purification	Ion exchange chromatography

<b>Isotype</b>	IgG2b
<b>Recommend Usage</b>	Flow Cytometry (1:50) Immunohistochemistry (Frozen sections) Immunohistochemistry (Formalin/PFA-fixed paraffin-embedded sections) (10 ug/mL) Immunoprecipitation The optimal working dilution should be determined by the end user.
<b>Storage Buffer</b>	In PBS (0.09% sodium azide).
<b>Storage Instruction</b>	Store at 4°C. For long term storage store at -20°C. Aliquot to avoid repeated freezing and thawing.
<b>Note</b>	This product contains sodium azide: a POISONOUS AND HAZARDOUS SUBSTANCE which should be handled by trained staff only.

## Applications

- Immunohistochemistry (Formalin/PFA-fixed paraffin-embedded sections)

Immunohistochemical staining (Formalin-fixed paraffin-embedded sections) of mouse spleen with Itgam monoclonal antibody, clone M1/70.15 (Cat # MAB12598) at 10 ug/mL working concentration.

- Immunohistochemistry (Frozen sections)

- Immunoprecipitation

- Flow Cytometry

Flow cytometric analysis of mouse peritoneal macrophage with Itgam monoclonal antibody, clone M1/70.15 (Cat # MAB12598).

## Gene Info — Itgam

<b>Entrez GeneID</b>	<a href="#">16409</a>
<b>Gene Name</b>	Itgam
<b>Gene Alias</b>	CD11b/CD18, CR3, CR3A, Cd11b, F730045J24Rik, Ly-40, MAC1, Mac-1, Mac-1a
<b>Gene Description</b>	integrin alpha M
<b>Gene Ontology</b>	<a href="#">Hyperlink</a>
<b>Other Designations</b>	CD11B (p170) Mac-1 alpha cell surface glycoprotein MAC-1 alpha subunit complement component receptor 3 alpha complement component receptor 3 alpha-a complement receptor type 3 leukocyte adhesion receptor MO1 macrophage antigen alpha