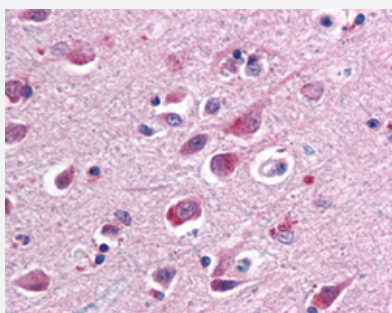


# SARM1 monoclonal antibody, clone Sarmy-1

Catalog # MAB12507      Size 50 ug

## Applications



### Immunohistochemistry (Formalin/PFA-fixed paraffin-embedded sections)

Immunohistochemical staining (Formalin-fixed paraffin-embedded sections) of human brain, cortex with SARM1 monoclonal antibody, clone Sarmy-1 (Cat # MAB12507) at 10 ug/mL working concentration.

## Specification

<b>Product Description</b>	Mouse monoclonal antibody raised against human SARM1.
<b>Immunogen</b>	Recombinant protein corresponding to amino acids 93-292 of human SARM1.
<b>Host</b>	Mouse
<b>Reactivity</b>	Human
<b>Form</b>	Liquid
<b>Purification</b>	Protein G purification
<b>Isotype</b>	IgG2b
<b>Recommend Usage</b>	Immunohistochemistry (Formalin/PFA-fixed paraffin-embedded sections) (10 ug/mL) Immunoprecipitation (1:200) The optimal working dilution should be determined by the end user.
<b>Storage Buffer</b>	In PBS (10% glycerol, 0.02% sodium azide).
<b>Storage Instruction</b>	Store at 4°C for short term. For long term storage store at -20°C. Aliquot to avoid repeated freezing and thawing.

**Note**

This product contains sodium azide: a POISONOUS AND HAZARDOUS SUBSTANCE which should be handled by trained staff only.

## Applications

- Immunohistochemistry (Formalin/PFA-fixed paraffin-embedded sections)

Immunohistochemical staining (Formalin-fixed paraffin-embedded sections) of human brain, cortex with SARM1 monoclonal antibody, clone Samy-1 (Cat # MAB12507) at 10 ug/mL working concentration.

- Immunoprecipitation

## Gene Info — SARM1

Entrez GeneID	<a href="#">23098</a>
---------------	-----------------------

Gene Name	SARM1
-----------	-------

Gene Alias	FLJ36296, KIAA0524, SAMD2, SARM
------------	---------------------------------

Gene Description	sterile alpha and TIR motif containing 1
------------------	--

Omim ID	<a href="#">607732</a>
---------	------------------------

Gene Ontology	<a href="#">Hyperlink</a>
---------------	---------------------------

Gene Summary	ortholog of Drosophila
--------------	------------------------

Other Designations	sterile alpha and HEAT/Armadillo motif protein, ortholog of Drosophila
--------------------	--

## Disease

- [Cardiovascular Diseases](#)
- [Diabetes Mellitus](#)
- [Edema](#)