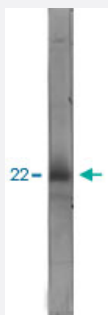


VSNL1 monoclonal antibody, clone 2D11

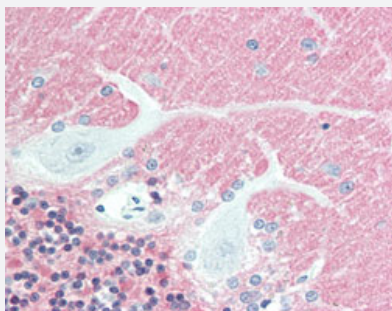
Catalog # MAB12497 Size 50 uL

Applications



Western Blot (Tissue lysate)

Western blot analysis of bovine cerebellum homogenate using VSNL1 monoclonal antibody, clone 2D11 (Cat # MAB12497) at 1:1000-1:2000 dilution.



Immunohistochemistry (Formalin/PFA-fixed paraffin-embedded sections)

Immunohistochemical staining (Formalin-fixed paraffin-embedded sections) of human cerebellum tissue with VSNL1 monoclonal antibody, clone 2D11 (Cat # MAB12497) under 10 ug/mL working concentration.

Specification

Product Description	Mouse monoclonal antibody raised against full length recombinant human VSNL1.
Immunogen	Recombinant protein corresponding to full length human VSNL1.
Host	Mouse
Reactivity	Bovine, Human
Form	Liquid
Purification	Affinity purification
Isotype	IgG1

Recommend Usage	Immunofluorescence (1:500-1:1000) Immunohistochemistry (1:500-1:1000) Immunohistochemistry (Formalin/PFA-fixed paraffin-embedded sections) (10 ug/mL) Western Blot (1:1000-1:2000) The optimal working dilution should be determined by the end user.
Storage Buffer	In PBS (10 mM sodium azide)
Storage Instruction	Store at 4°C. For long term storage store at -20°C. Aliquot to avoid repeated freezing and thawing.
Note	This product contains sodium azide: a POISONOUS AND HAZARDOUS SUBSTANCE which should be handled by trained staff only.

Applications

- Western Blot (Tissue lysate)

Western blot analysis of bovine cerebellum homogenate using VSNL1 monoclonal antibody, clone 2D11 (Cat # MAB12497) at 1:1000-1:2000 dilution.

- Immunohistochemistry (Formalin/PFA-fixed paraffin-embedded sections)

Immunohistochemical staining (Formalin-fixed paraffin-embedded sections) of human cerebellum tissue with VSNL1 monoclonal antibody, clone 2D11 (Cat # MAB12497) under 10 ug/mL working concentration.

- Immunohistochemistry

- Immunofluorescence

Gene Info — VSNL1

Entrez GeneID	7447
Protein Accession#	P62760
Gene Name	VSNL1
Gene Alias	HLP3, HPCAL3, HUVISL1, VILIP, VILIP-1
Gene Description	visinin-like 1
Omim ID	600817
Gene Ontology	Hyperlink

Gene Summary

This gene is a member of the visinin/recoverin subfamily of neuronal calcium sensor proteins. The encoded protein is strongly expressed in granule cells of the cerebellum where it associates with membranes in a calcium-dependent manner and modulates intracellular signaling pathways of the central nervous system by directly or indirectly regulating the activity of adenylyl cyclase. Alternatively spliced transcript variants have been observed, but their full-length nature has not been determined. [provided by RefSeq]

Other Designations

OTTHUMP00000115804|hippocalcin-like protein 3

Disease

- [Genetic Predisposition to Disease](#)
- [Schizophrenia](#)