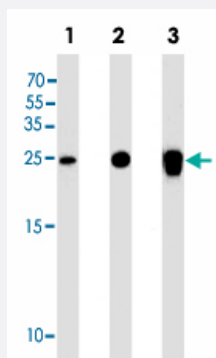


# UCHL1 monoclonal antibody, clone 696CT2.1.4

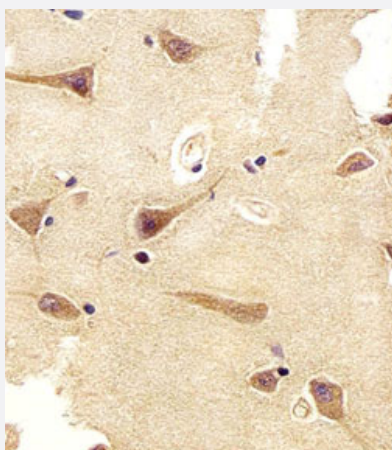
Catalog # MAB12336      Size 400 uL

## Applications



### Western Blot (Cell lysate)

Western blot analysis of Lane 1: 293T cell line lysates Lane 2: NCI-H1299 cell line lysates Lane 3: rat PC-12 cell line lysates reacted with UCHL1 monoclonal antibody (Cat # MAB12336) at 1:1000 dilution.



### Immunohistochemistry (Formalin/PFA-fixed paraffin-embedded sections)

Immunohistochemical staining of paraffin-embedded human brain section reacted with UCHL1 monoclonal antibody (Cat # MAB12336) at 1:25 dilution.

## Specification

<b>Product Description</b>	Mouse monoclonal antibody raised against synthetic peptide of human UCHL1.
<b>Immunogen</b>	A synthetic peptide (conjugated with KLH) corresponding to amino acids 185-214 of human UCHL1.
<b>Host</b>	Mouse
<b>Reactivity</b>	Human, Mouse
<b>Form</b>	Liquid

<b>Purification</b>	Protein G purification
<b>Isotype</b>	IgG1
<b>Recommend Usage</b>	Immunohistochemistry (1:25) Western Blot (1:1000) The optimal working dilution should be determined by the end user.
<b>Storage Buffer</b>	In PBS (0.09% sodium azide)
<b>Storage Instruction</b>	Store at 4°C. For long term storage store at -20°C. Aliquot to avoid repeated freezing and thawing.
<b>Note</b>	This product contains sodium azide: a POISONOUS AND HAZARDOUS SUBSTANCE which should be handled by trained staff only.

## Applications

- Western Blot (Cell lysate)

Western blot analysis of Lane 1: 293T cell line lysates Lane 2: NCI-H1299 cell line lysates Lane 3: rat PC-12 cell line lysates reacted with UCHL1 monoclonal antibody (Cat # MAB12336) at 1:1000 dilution.

- Immunohistochemistry (Formalin/PFA-fixed paraffin-embedded sections)

Immunohistochemical staining of paraffin-embedded human brain section reacted with UCHL1 monoclonal antibody (Cat # MAB12336) at 1:25 dilution.

## Gene Info — UCHL1

<b>Entrez GeneID</b>	<a href="#">7345</a>
<b>Gene Name</b>	UCHL1
<b>Gene Alias</b>	PARK5, PGP9.5, Uch-L1
<b>Gene Description</b>	ubiquitin carboxyl-terminal esterase L1 (ubiquitin thiolesterase)
<b>Omim ID</b>	<a href="#">168600</a> <a href="#">191342</a>
<b>Gene Ontology</b>	<a href="#">Hyperlink</a>
<b>Gene Summary</b>	The protein encoded by this gene belongs to the peptidase C12 family. This enzyme is a thiol protease that hydrolyzes a peptide bond at the C-terminal glycine of ubiquitin. This gene is specifically expressed in the neurons and in cells of the diffuse neuroendocrine system. Mutations in this gene may be associated with Parkinson disease

**Other Designations**

ubiquitin C-terminal esterase L1|ubiquitin carboxyl-terminal esterase L1|ubiquitin thiolesterase L1

**Disease**

- [Alzheimer disease](#)
- [Genetic Predisposition to Disease](#)
- [Huntington disease](#)
- [Movement Disorders](#)
- [Multiple System Atrophy](#)
- [Parkinson disease](#)
- [Parkinsonian Disorders](#)