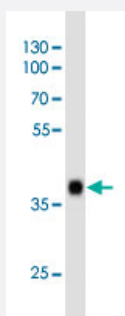


# SOX2 monoclonal antibody, clone 57CT23.3.4

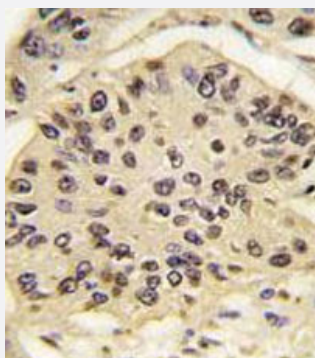
Catalog # MAB12319      Size 400 uL

## Applications



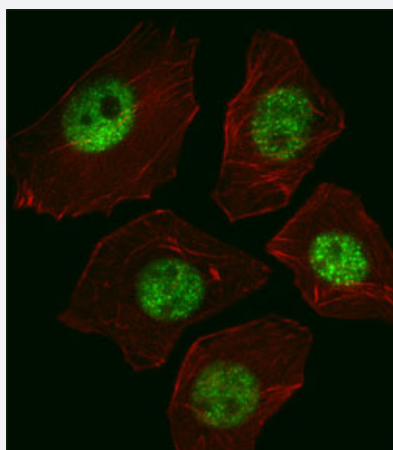
### Western Blot (Cell lysate)

Western blot analysis of NCCIT cell line lysates reacted with SOX2 monoclonal antibody (Cat # MAB12319) at 1:1000 dilution.



### Immunohistochemistry (Formalin/PFA-fixed paraffin-embedded sections)

Immunohistochemical staining of formalin-fixed and paraffin-embedded human lung carcinoma tissue reacted with SOX2 monoclonal antibody (Cat # MAB12319) at 1:50-1:100 dilution.

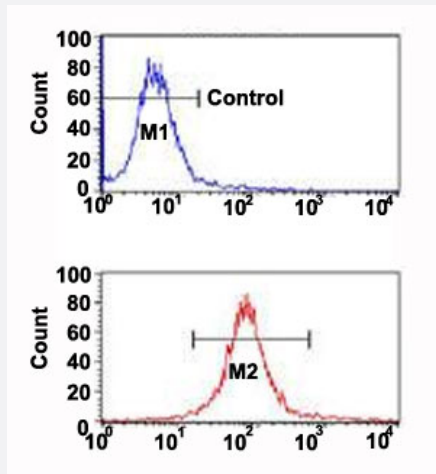


### Immunofluorescence

Immunofluorescent staining of A549 cell reacted with SOX2 monoclonal antibody (Cat # MAB12319) at 1:100 dilution.

## Flow Cytometry

Flow cytometric analysis of NCI-H460 cells (bottom histogram) and a negative control cell (top histogram) reacted with SOX2 monoclonal antibody (Cat # MAB12319) at 1:10-1:50 dilution.



## Specification

<b>Product Description</b>	Mouse monoclonal antibody raised against human SOX2.
<b>Immunogen</b>	Recombinant protein corresponding to human SOX2.
<b>Host</b>	Mouse
<b>Reactivity</b>	Human
<b>Form</b>	Liquid
<b>Purification</b>	Protein G purification
<b>Isotype</b>	IgG1
<b>Recommend Usage</b>	Flow Cytometry (1:10-1:50) Immunohistochemistry (1:50-1:100) Immunofluorescence (1:100) Western Blot (1:200-1:2000) The optimal working dilution should be determined by the end user.
<b>Storage Buffer</b>	In PBS (0.09% sodium azide)
<b>Storage Instruction</b>	Store at 4°C. For long term storage store at -20°C. Aliquot to avoid repeated freezing and thawing.
<b>Note</b>	This product contains sodium azide: a POISONOUS AND HAZARDOUS SUBSTANCE which should be handled by trained staff only.

## Applications

- Western Blot (Cell lysate)

Western blot analysis of NCCIT cell line lysates reacted with SOX2 monoclonal antibody (Cat # MAB12319) at 1:1000 dilution.

- Immunohistochemistry (Formalin/PFA-fixed paraffin-embedded sections)

Immunohistochemical staining of formalin-fixed and paraffin-embedded human lung carcinoma tissue reacted with SOX2 monoclonal antibody (Cat # MAB12319) at 1:50-1:100 dilution.

- Immunofluorescence

Immunofluorescent staining of A549 cell reacted with SOX2 monoclonal antibody (Cat # MAB12319) at 1:100 dilution.

- Flow Cytometry

Flow cytometric analysis of NCI-H460 cells (bottom histogram) and a negative control cell (top histogram) reacted with SOX2 monoclonal antibody (Cat # MAB12319) at 1:10-1:50 dilution.

## Gene Info — SOX2

Entrez GeneID	<a href="#">6657</a>
Gene Name	SOX2
Gene Alias	ANOP3, MCOPS3, MGC2413
Gene Description	SRY (sex determining region Y)-box 2
Omim ID	<a href="#">184429</a> <a href="#">206900</a>
Gene Ontology	<a href="#">Hyperlink</a>
Gene Summary	This intronless gene encodes a member of the SRY-related HMG-box (SOX) family of transcription factors involved in the regulation of embryonic development and in the determination of cell fate. The product of this gene is required for stem-cell maintenance in the central nervous system, and also regulates gene expression in the stomach. Mutations in this gene have been associated with optic nerve hypoplasia and with syndromic microphthalmia, a severe form of structural eye malformation. This gene lies within an intron of another gene called SOX2 overlapping transcript (SOX2 OT). [provided by RefSeq]
Other Designations	SRY-related HMG-box gene 2 sex-determining region Y-box 2 transcription factor SOX2

## Disease

- [Anophthalmos](#)

- [Coloboma](#)
- [Diabetes Mellitus](#)
- [Diabetic Nephropathies](#)
- [Genetic Predisposition to Disease](#)
- [Kidney Failure](#)
- [Microphthalmos](#)
- [Myopia](#)