

AKT3 monoclonal antibody, clone 154CT4.5.3

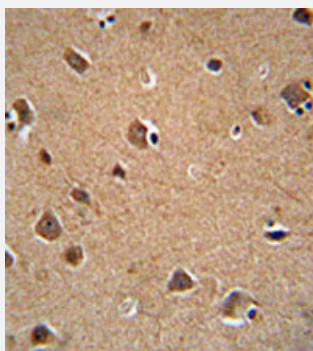
Catalog # MAB12303 Size 400 uL

Applications



Western Blot (Cell lysate)

Western blot analysis of mouse NIH-3T3 cell line lysates reacted with AKT3 monoclonal antibody (Cat # MAB12303) at 1:100-1:500 dilution.



Immunohistochemistry (Formalin/PFA-fixed paraffin-embedded sections)

Immunohistochemical staining of formalin-fixed and paraffin-embedded human brain tissue reacted with AKT3 monoclonal antibody (Cat # MAB12303) at 1:50-1:100 dilution.

Specification

Product Description	Mouse monoclonal antibody raised against human AKT3.
Immunogen	Recombinant protein corresponding to human AKT3.
Host	Mouse
Reactivity	Human, Mouse
Form	Liquid
Purification	Protein G purification

Isotype	IgG1, lambda
Recommend Usage	Immunohistochemistry (1:50-1:100) Western Blot (1:100-1:500) The optimal working dilution should be determined by the end user.
Storage Buffer	In PBS (0.09% sodium azide)
Storage Instruction	Store at 4°C. For long term storage store at -20°C. Aliquot to avoid repeated freezing and thawing.
Note	This product contains sodium azide: a POISONOUS AND HAZARDOUS SUBSTANCE which should be handled by trained staff only.

Applications

- Western Blot (Cell lysate)

Western blot analysis of mouse NIH-3T3 cell line lysates reacted with AKT3 monoclonal antibody (Cat # MAB12303) at 1:100-1:500 dilution.

- Immunohistochemistry (Formalin/PFA-fixed paraffin-embedded sections)

Immunohistochemical staining of formalin-fixed and paraffin-embedded human brain tissue reacted with AKT3 monoclonal antibody (Cat # MAB12303) at 1:50-1:100 dilution.

Gene Info — AKT3

Entrez GeneID	10000
Gene Name	AKT3
Gene Alias	DKFZp434N0250, PKB-GAMMA, PKBG, PRKBG, RAC-PK-gamma, RAC-gamma, STK-2
Gene Description	v-akt murine thymoma viral oncogene homolog 3 (protein kinase B, gamma)
Omim ID	611223
Gene Ontology	Hyperlink
Gene Summary	The protein encoded by this gene is a member of the AKT, also called PKB, serine/threonine protein kinase family. AKT kinases are known to be regulators of cell signaling in response to insulin and growth factors. They are involved in a wide variety of biological processes including cell proliferation, differentiation, apoptosis, tumorigenesis, as well as glycogen synthesis and glucose uptake. This kinase has been shown to be stimulated by platelet-derived growth factor (PDGF), insulin, and insulin-like growth factor 1 (IGF1). Alternatively splice transcript variants encoding distinct isoforms have been described. [provided by RefSeq]

Other Designations

OTTHUMP00000037911|OTTHUMP00000037912|RAC-gamma serine/threonine protein kinase|protein kinase B gamma|serine threonine protein kinase, Akt-3|v-akt murine thymoma viral oncogene homolog 3

Pathway

- [Acute myeloid leukemia](#)
- [Adipocytokine signaling pathway](#)
- [Apoptosis](#)
- [B cell receptor signaling pathway](#)
- [Chemokine signaling pathway](#)
- [Chronic myeloid leukemia](#)
- [Colorectal cancer](#)
- [Endometrial cancer](#)
- [ErbB signaling pathway](#)
- [Fc epsilon RI signaling pathway](#)
- [Fc gamma R-mediated phagocytosis](#)
- [Focal adhesion](#)
- [Glioma](#)
- [Insulin signaling pathway](#)
- [Jak-STAT signaling pathway](#)
- [MAPK signaling pathway](#)
- [Melanoma](#)
- [mTOR signaling pathway](#)
- [Neurotrophin signaling pathway](#)
- [Non-small cell lung cancer](#)
- [Pancreatic cancer](#)
- [Pathways in cancer](#)

- [Prostate cancer](#)
- [Renal cell carcinoma](#)
- [Small cell lung cancer](#)
- [T cell receptor signaling pathway](#)
- [Tight junction](#)
- [Toll-like receptor signaling pathway](#)
- [VEGF signaling pathway](#)

Disease

- [Adenocarcinoma](#)
- [Cardiovascular Diseases](#)
- [Diabetes Mellitus](#)
- [Edema](#)
- [Genetic Predisposition to Disease](#)
- [HIV Infections](#)
- [Multiple Sclerosis](#)
- [Thyroid Neoplasms](#)
- [Urinary Bladder Neoplasms](#)