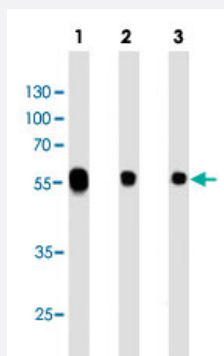


# ALDH1A1 monoclonal antibody, clone 152CT1.2.2

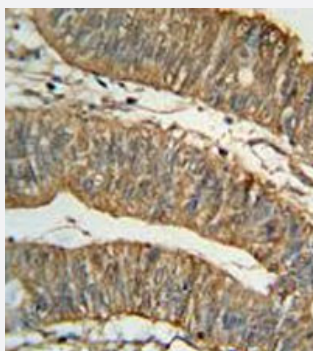
Catalog # MAB12300      Size 400 uL

## Applications



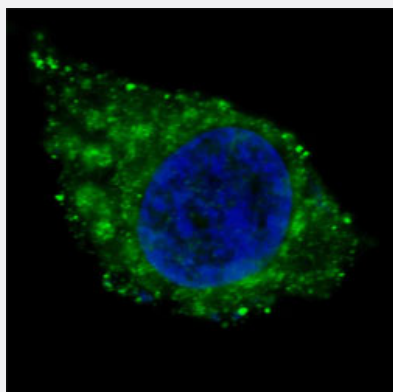
### Western Blot (Cell lysate)

Western blot analysis of Lane 1: HepG2 cell line lysates Lane 2: K562 cell line lysates Lane 3: NCI-H460 cell line lysates reacted with ALDH1A1 monoclonal antibody (Cat # MAB12300) at 1:1000 dilution.



### Immunohistochemistry (Formalin/PFA-fixed paraffin-embedded sections)

Immunohistochemical staining of formalin-fixed and paraffin-embedded human colon carcinoma reacted with ALDH1A1 monoclonal antibody (Cat # MAB12300) at 1:50-1:100 dilution.



### Immunofluorescence

Immunofluorescent staining of HepG2 cells reacted with ALDH1A1 monoclonal antibody (Cat # MAB12300) at 1:10-1:50 dilution.

## Specification

Product Description	Mouse monoclonal antibody raised against human ALDH1A1.
Immunogen	Recombinant protein corresponding to human ALDH1A1.
Host	Mouse
Reactivity	Human
Form	Liquid
Purification	Protein G purification
Isotype	IgG1
Recommend Usage	Immunohistochemistry (1:50-1:100) Immunofluorescence (1:10-1:50) Western Blot (1:500-1:1000) The optimal working dilution should be determined by the end user.
Storage Buffer	In PBS (0.09% sodium azide)
Storage Instruction	Store at 4°C. For long term storage store at -20°C. Aliquot to avoid repeated freezing and thawing.
Note	This product contains sodium azide: a POISONOUS AND HAZARDOUS SUBSTANCE which should be handled by trained staff only.

## Applications

- Western Blot (Cell lysate)

Western blot analysis of Lane 1: HepG2 cell line lysates Lane 2: K562 cell line lysates Lane 3: NCI-H460 cell line lysates reacted with ALDH1A1 monoclonal antibody (Cat # MAB12300) at 1:1000 dilution.

- Immunohistochemistry (Formalin/PFA-fixed paraffin-embedded sections)

Immunohistochemical staining of formalin-fixed and paraffin-embedded human colon carcinoma reacted with ALDH1A1 monoclonal antibody (Cat # MAB12300) at 1:50-1:100 dilution.

- Immunofluorescence

Immunofluorescent staining of HepG2 cells reacted with ALDH1A1 monoclonal antibody (Cat # MAB12300) at 1:10-1:50 dilution.

## Gene Info — ALDH1A1

Entrez GeneID [216](#)

Gene Name	ALDH1A1
Gene Alias	ALDC, ALDH-E1, ALDH1, ALDH11, MGC2318, PUMB1, RALDH1
Gene Description	aldehyde dehydrogenase 1 family, member A1
Gene Ontology	<a href="#">Hyperlink</a>
Gene Summary	<p>This protein belongs to the aldehyde dehydrogenases family of proteins. Aldehyde dehydrogenase is the second enzyme of the major oxidative pathway of alcohol metabolism. Two major liver isoforms of this enzyme, cytosolic and mitochondrial, can be distinguished by their electrophoretic mobilities, kinetic properties, and subcellular localizations. Most Caucasians have two major isozymes, while approximately 50% of Orientals have only the cytosolic isozyme, missing the mitochondrial isozyme. A remarkably higher frequency of acute alcohol intoxication among Orientals than among Caucasians could be related to the absence of the mitochondrial isozyme. This gene encodes a cytosolic isoform, which has a high affinity for aldehydes. [provided by RefSeq]</p>
Other Designations	ALDH class 1 acetaldehyde dehydrogenase 1 aldehyde dehydrogenase 1, soluble aldehyde dehydrogenase 1A1 aldehyde dehydrogenase, liver cytosolic retinal dehydrogenase 1 retinaldehyde dehydrogenase 1

## Pathway

- [Metabolic pathways](#)
- [Retinol metabolism](#)

## Disease

- [Alcoholism](#)
- [Breast cancer](#)
- [Breast Neoplasms](#)
- [Carcinoma](#)
- [Chromosome Deletion](#)
- [Cleft Lip](#)
- [Cleft Palate](#)
- [Disease Models](#)
- [Drug Toxicity](#)

- [Genetic Predisposition to Disease](#)
- [Kidney Failure](#)
- [Lymphoma](#)
- [Neoplasms](#)
- [Ovarian cancer](#)
- [Ovarian Neoplasms](#)
- [Schizophrenia](#)
- [Tobacco Use Disorder](#)