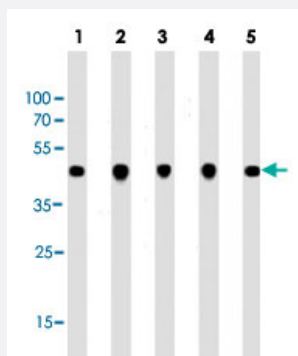


ACTB monoclonal antibody, clone 137CT26.1.1

Catalog # MAB12291 Size 400 uL

Applications



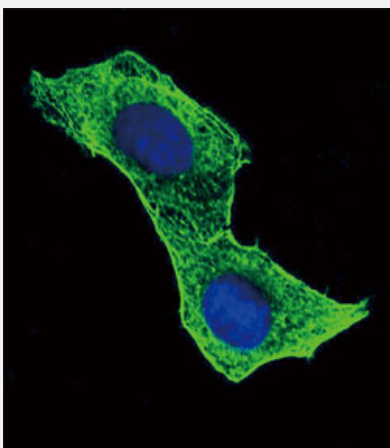
Western Blot (Cell lysate)

Western blot analysis of Lane 1: A431 whole cell lysates Lane 2: C2C12 whole cell lysates Lane 3: C6 whole cell lysates Lane 4: Hela whole cell lysates Lane 5: MCF-7 whole cell lysates reacted with ACTB monoclonal antibody (Cat # MAB12291) at 1:1000 dilution.



Immunohistochemistry (Formalin/PFA-fixed paraffin-embedded sections)

Immunohistochemical staining of formalin-fixed and paraffin-embedded human skeletal muscle section reacted with ACTB monoclonal antibody (Cat # MAB12291) at 1:25 dilution.



Immunofluorescence

Immunofluorescent staining of Hela cell reacted with ACTB monoclonal antibody (Cat # MAB12291) at 1:10-1:50 dilution.

Specification

| | |
|---------------------|--|
| Product Description | Mouse monoclonal antibody raised against human ACTB. |
| Immunogen | Recombinant protein corresponding to human ACTB. |
| Host | Mouse |
| Reactivity | Human, Mouse, Rat |
| Form | Liquid |
| Purification | Protein G purification |
| Isotype | IgG1, kappa |
| Recommend Usage | Immunohistochemistry (1:25) Immunofluorescence (1:10-1:50) Western Blot (1:1000) The optimal working dilution should be determined by the end user. |
| Storage Buffer | In PBS (0.09% sodium azide) |
| Storage Instruction | Store at 4°C. For long term storage store at -20°C. Aliquot to avoid repeated freezing and thawing. |
| Note | This product contains sodium azide: a POISONOUS AND HAZARDOUS SUBSTANCE which should be handled by trained staff only. |

Applications

- Western Blot (Cell lysate)

Western blot analysis of Lane 1: A431 whole cell lysates Lane 2: C2C12 whole cell lysates Lane 3: C6 whole cell lysates Lane 4: Hela whole cell lysates Lane 5: MCF-7 whole cell lysates reacted with ACTB monoclonal antibody (Cat # MAB12291) at 1:1000 dilution.

- Immunohistochemistry (Formalin/PFA-fixed paraffin-embedded sections)

Immunohistochemical staining of formalin-fixed and paraffin-embedded human skeletal muscle section reacted with ACTB monoclonal antibody (Cat # MAB12291) at 1:25 dilution.

- Immunofluorescence

Immunofluorescent staining of Hela cell reacted with ACTB monoclonal antibody (Cat # MAB12291) at 1:10-1:50 dilution.

Gene Info — ACTB

| | |
|--------------------|---|
| Entrez GeneID | 60 |
| Gene Name | ACTB |
| Gene Alias | PS1TP5BP1 |
| Gene Description | actin, beta |
| Omim ID | 102630 |
| Gene Ontology | Hyperlink |
| Gene Summary | This gene encodes one of six different actin proteins. Actins are highly conserved proteins that are involved in cell motility, structure, and integrity. This actin is a major constituent of the contractile apparatus and one of the two nonmuscle cytoskeletal actins. [provided by RefSeq] |
| Other Designations | PS1TP5-binding protein 1 actin, cytoplasmic 1 beta actin beta cytoskeletal actin |

Publication Reference

- [Increased acute blood flow induced by the aqueous extract of Euterpe oleracea Mart. fruit pulp in rats in vivo is not related to the direct activation of endothelial cells.](#)

Victória Caroline Bottino Pontes, Juliana Pereira Tavares de Melo Tavares, Tatiana Rosado Rosenstock, Domingos Sávio Rodrigues, Marcelo Icimoto Yudi, Jaqueline Pereira Moura Soares, Suzana Cosa Ribeiro, Rafael Sutti, Luce Maria Brandão Torres, Fabiana Henriques Machado de Melo, Maria Thereza Gamberini.

Journal of Ethnopharmacology 2021 Feb; 271:113885.

Application: WB-Ce, Rat, Rat endothelial cells

Pathway

- [Adherens junction](#)
- [Arrhythmogenic right ventricular cardiomyopathy \(ARVC\)](#)
- [Focal adhesion](#)
- [Hypertrophic cardiomyopathy \(HCM\)](#)
- [Leukocyte transendothelial migration](#)
- [Pathogenic Escherichia coli infection - EHEC](#)
- [Regulation of actin cytoskeleton](#)
- [Tight junction](#)

- [Vibrio cholerae infection](#)

Disease

- [Breast cancer](#)
- [Breast Neoplasms](#)