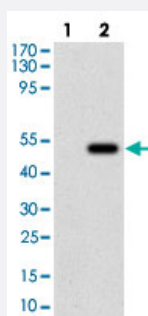


# Bpifa2 monoclonal antibody, clone 2B4F5

Catalog # MAB12267

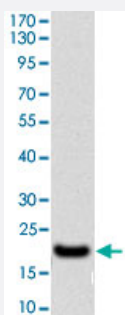
Size 100 ug

## Applications



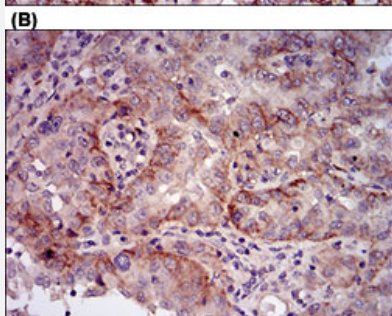
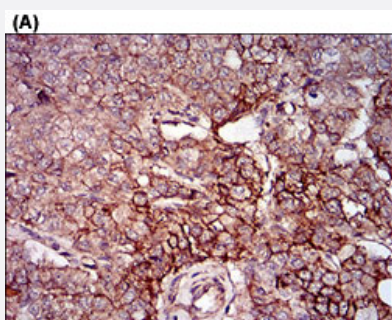
### Western Blot (Transfected lysate)

Western blot analysis of Lane 1: Negative control [HEK293 cell lysate]; Lane 2: Over-expression lysate [Bpifa2 (AA: 16-169)-hlgGfc transfected HEK293 cells] with Bpifa2 monoclonal antibody, clone 2B4F5 (Cat# MAB12267) at 1:500-1:2000 dilution.



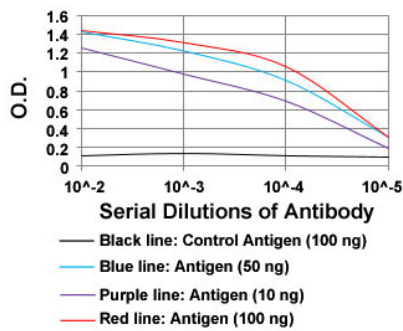
### Western Blot (Recombinant protein)

Western blot analysis of Bpifa2 (AA: 16-169) recombinant protein (Expected MW is 18.5 kDa) with Bpifa2 monoclonal antibody, clone 2B4F5 (Cat# MAB12267) at 1:500-1:2000 dilution.



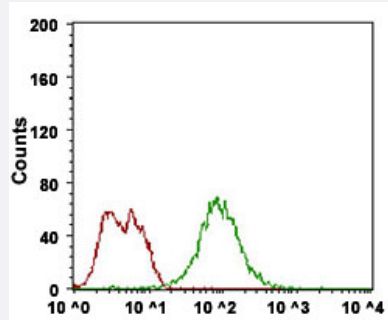
### Immunohistochemistry (Formalin/PFA-fixed paraffin-embedded sections)

Immunohistochemical staining of prostate cancer tissues (A) and endometrial cancer tissues (B) with Bpifa2 monoclonal antibody, clone 2B4F5 (Cat# MAB12267) at 1:200-1:1000 dilution.



## Enzyme-linked Immunoabsorbent Assay

ELISA analysis of Bpifa2 monoclonal antibody, clone 2B4F5 (Cat# MAB12267) at 1:10000 dilution.



## Flow Cytometry

Flow cytometric analysis of MCF-7 cells with Bpifa2 monoclonal antibody, clone 2B4F5 (Cat# MAB12267) at 1:200-1:400 dilution (Green) and negative control (Red).

## Specification

<b>Product Description</b>	Mouse monoclonal antibody raised against partial recombinant mouse Bpifa2.
<b>Immunogen</b>	Recombinant protein corresponding to amino acids 16-169 of mouse Bpifa2.
<b>Host</b>	Mouse
<b>Theoretical MW (kDa)</b>	24.8
<b>Reactivity</b>	Human
<b>Form</b>	Liquid
<b>Isotype</b>	IgG1
<b>Recommend Usage</b>	ELISA (1:10000) Flow Cytometry (1:200-1:400) Immunohistochemistry (1:200-1:1000) Western Blot (1:500-1:2000) The optimal working dilution should be determined by the end user.
<b>Storage Buffer</b>	In PBS (0.05% sodium azide)
<b>Storage Instruction</b>	Store at 4°C. For long term storage store at -20°C. Aliquot to avoid repeated freezing and thawing.

**Note**

This product contains sodium azide: a POISONOUS AND HAZARDOUS SUBSTANCE which should be handled by trained staff only.

## Applications

- Western Blot (Transfected lysate)

Western blot analysis of Lane 1: Negative control [HEK293 cell lysate]; Lane 2: Over-expression lysate [Bpifa2 (AA: 16-169)-hlgGfc transfected HEK293 cells] with Bpifa2 monoclonal antibody, clone 2B4F5 (Cat# MAB12267) at 1:500-1:2000 dilution.

- Western Blot (Recombinant protein)

Western blot analysis of Bpifa2 (AA: 16-169) recombinant protein (Expected MW is 18.5 kDa) with Bpifa2 monoclonal antibody, clone 2B4F5 (Cat# MAB12267) at 1:500-1:2000 dilution.

- Immunohistochemistry (Formalin/PFA-fixed paraffin-embedded sections)

Immunohistochemical staining of prostate cancer tissues (A) and endometrial cancer tissues (B) with Bpifa2 monoclonal antibody, clone 2B4F5 (Cat# MAB12267) at 1:200-1:1000 dilution.

- Enzyme-linked Immunoabsorbent Assay

ELISA analysis of Bpifa2 monoclonal antibody, clone 2B4F5 (Cat# MAB12267) at 1:10000 dilution.

- Flow Cytometry

Flow cytometric analysis of MCF-7 cells with Bpifa2 monoclonal antibody, clone 2B4F5 (Cat# MAB12267) at 1:200-1:400 dilution (Green) and negative control (Red).

## Gene Info — Psp

Entrez GeneID	<a href="#">19194</a>
---------------	-----------------------

Gene Name	Psp
-----------	-----

Gene Alias	-
------------	---

Gene Description	parotid secretory protein
------------------	---------------------------

Gene Ontology	<a href="#">Hyperlink</a>
---------------	---------------------------

Other Designations	OTTMUSP00000018314
--------------------	--------------------