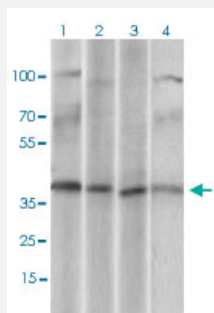


CD68 monoclonal antibody, clone 3F7D3

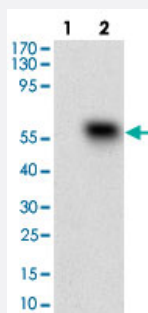
Catalog # MAB12260 Size 100 ug

Applications



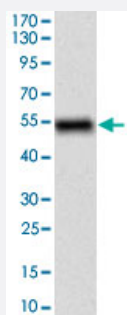
Western Blot (Cell lysate)

Western blot analysis of Lane 1: U937 cell lysate; Lane 2: HeLa cell lysate; Lane 3: HepG2 cell lysate; Lane 4: Jurkat cell lysate with CD68 monoclonal antibody, clone 3F7D3 (Cat# MAB12260) at 1:500-1:2000 dilution.



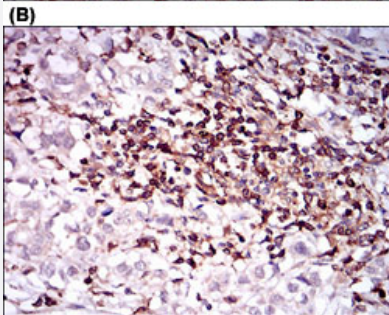
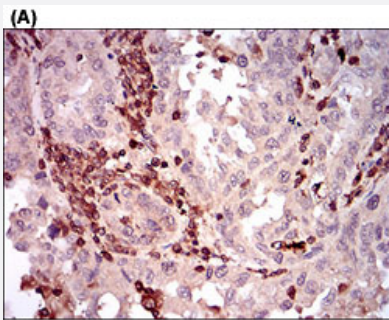
Western Blot (Transfected lysate)

Western blot analysis of Lane 1: Negative control [HEK293 cell lysate]; Lane 2: Over-expression lysate [CD68 (AA: 42-155)-hlgGfC transfected HEK293 cells] with CD68 monoclonal antibody, clone 3F7D3 (Cat# MAB12260) at 1:500-1:2000 dilution.



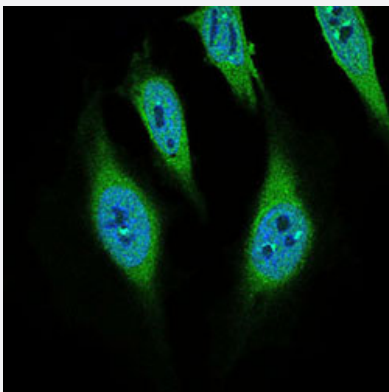
Western Blot (Recombinant protein)

Western blot analysis of human CD68 (AA: 42-155) recombinant protein (Expected MW is 37.4 kDa) with CD68 monoclonal antibody, clone 3F7D3 (Cat# MAB12260) at 1:500-1:2000 dilution.



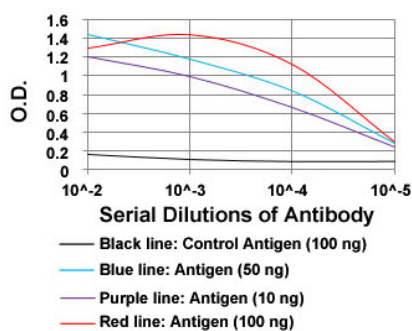
Immunohistochemistry (Formalin/PFA-fixed paraffin-embedded sections)

Immunohistochemical staining of human endometrial cancer tissues (A) and bladder cancer tissues (B) with CTNNB1 monoclonal antibody, clone 1E4F5 (Cat# MAB12247) at 1:200-1:1000 dilution.



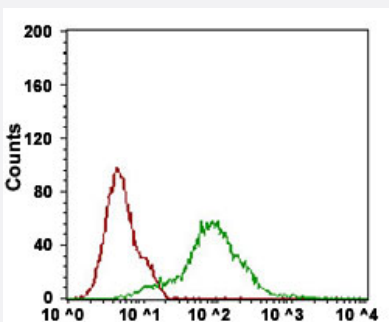
Immunofluorescence

Immunofluorescent staining of Hela cells with CD68 monoclonal antibody, clone 3F7D3 (Cat# MAB12260) at 1:200-1:1000 dilution.



Enzyme-linked Immunoabsorbent Assay

ELISA analysis of CD68 monoclonal antibody, clone 3F7D3 (Cat# MAB12260) at 1:10000 dilution.



Flow Cytometry

Flow cytometric analysis of Hela cells with CD68 monoclonal antibody, clone 3F7D3 (Cat# MAB12260) at 1:200-1:400 dilution (Green) and negative control (Red).

Specification

Product Description	Mouse monoclonal antibody raised against partial recombinant human CD68.
Immunogen	Recombinant protein corresponding to amino acids 42-155 of human CD68.
Host	Mouse
Theoretical MW (kDa)	37.4
Reactivity	Human
Form	Liquid
Isotype	IgG1
Recommend Usage	ELISA (1:10000) Flow Cytometry (1:200-1:400) Immunofluorescence (1:200-1:1000) Immunohistochemistry (1:200-1:1000) Western Blot (1:500-1:2000) The optimal working dilution should be determined by the end user.
Storage Buffer	In PBS (0.05% sodium azide)
Storage Instruction	Store at 4°C. For long term storage store at -20°C. Aliquot to avoid repeated freezing and thawing.
Note	This product contains sodium azide: a POISONOUS AND HAZARDOUS SUBSTANCE which should be handled by trained staff only.

Applications

- Western Blot (Cell lysate)

Western blot analysis of Lane 1: U937 cell lysate; Lane 2: Hela cell lysate; Lane 3: HepG2 cell lysate; Lane 4: Jurkat cell lysate with CD68 monoclonal antibody, clone 3F7D3 (Cat# MAB12260) at 1:500-1:2000 dilution.

- Western Blot (Transfected lysate)

Western blot analysis of Lane 1: Negative control [HEK293 cell lysate]; Lane 2: Over-expression lysate [CD68 (AA: 42-155)-hlgGfC transfected HEK293 cells] with CD68 monoclonal antibody, clone 3F7D3 (Cat# MAB12260) at 1:500-1:2000 dilution.

- Western Blot (Recombinant protein)

Western blot analysis of human CD68 (AA: 42-155) recombinant protein (Expected MW is 37.4 kDa) with CD68 monoclonal antibody, clone 3F7D3 (Cat# MAB12260) at 1:500-1:2000 dilution.

- Immunohistochemistry (Formalin/PFA-fixed paraffin-embedded sections)

Immunohistochemical staining of human endometrial cancer tissues (A) and bladder cancer tissues (B) with CTNNBL1 monoclonal antibody, clone 1E4F5 (Cat# MAB12247) at 1:200-1:1000 dilution.

- Immunofluorescence

Immunofluorescent staining of Hela cells with CD68 monoclonal antibody, clone 3F7D3 (Cat# MAB12260) at 1:200-1:1000 dilution.

- Enzyme-linked Immunoabsorbent Assay

ELISA analysis of CD68 monoclonal antibody, clone 3F7D3 (Cat# MAB12260) at 1:10000 dilution.

- Flow Cytometry

Flow cytometric analysis of Hela cells with CD68 monoclonal antibody, clone 3F7D3 (Cat# MAB12260) at 1:200-1:400 dilution (Green) and negative control (Red).

Gene Info — CD68

Entrez GeneID [968](#)

Gene Name CD68

Gene Alias DKFZp686M18236, GP110, SCARD1

Gene Description CD68 molecule

Omim ID [153634](#)

Gene Ontology [Hyperlink](#)

Gene Summary This gene encodes a 110-kD transmembrane glycoprotein that is highly expressed by human monocytes and tissue macrophages. It is a member of the lysosomal/endosomal-associated membrane glycoprotein (LAMP) family. The protein primarily localizes to lysosomes and endosomes with a smaller fraction circulating to the cell surface. It is a type I integral membrane protein with a heavily glycosylated extracellular domain and binds to tissue- and organ-specific lectins or selectins. The protein is also a member of the scavenger receptor family. Scavenger receptors typically function to clear cellular debris, promote phagocytosis, and mediate the recruitment and activation of macrophages. Alternative splicing results in multiple transcripts encoding different isoforms. [provided by RefSeq]

Other Designations CD68 antigen|OTTHUMP00000135285|macrophage antigen CD68|macrosialin|scavenger receptor class D, member 1

Pathway

- [Lysosome](#)