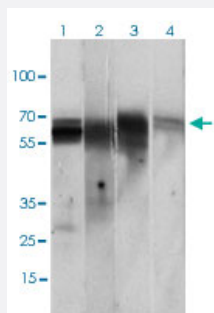


CAMK2G monoclonal antibody, clone 8G10C1

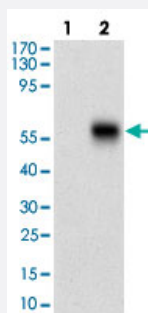
Catalog # MAB12257 Size 100 ug, 10 x 100 ug

Applications



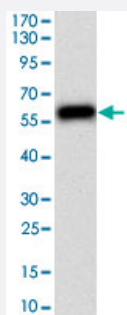
Western Blot (Cell lysate)

Western blot analysis of Lane 1: PC-12 cell lysate; Lane 2: Jurkat cell lysate; Lane 3: T47D cell lysate; Lane 4: HepG2 cell lysate with CAMK2G monoclonal antibody, clone 8G10C1 (Cat# MAB12257) at 1:500-1:2000 dilution.



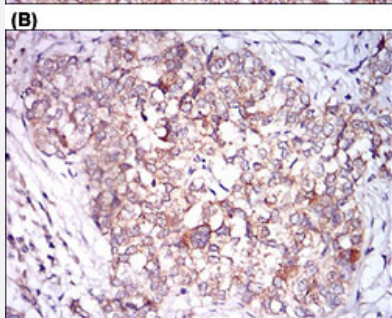
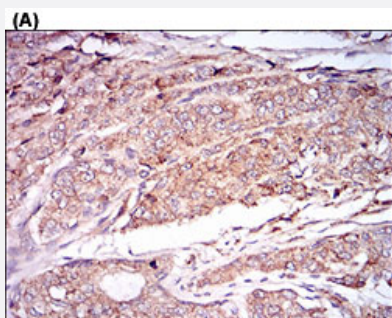
Western Blot (Transfected lysate)

Western blot analysis of Lane 1: Negative control [HEK293 cell lysate]; Lane 2: Over-expression lysate [CAMK2G (AA: 322-481)-hlgGfc transfected HEK293 cells] with CAMK2G monoclonal antibody, clone 8G10C1 (Cat# MAB12257) at 1:500-1:2000 dilution.



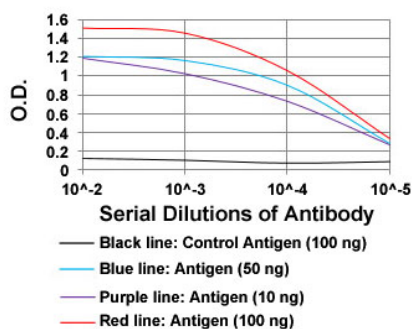
Western Blot (Recombinant protein)

Western blot analysis of human CAMK2G (AA: 322-481) recombinant protein (Expected MW is 44 kDa) with CAMK2G monoclonal antibody, clone 8G10C1 (Cat# MAB12257) at 1:500-1:2000 dilution.



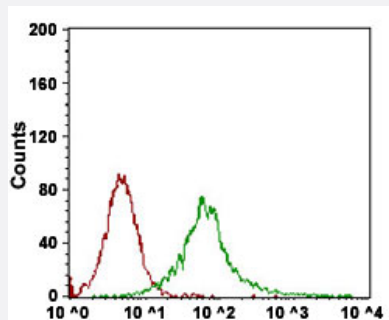
Immunohistochemistry (Formalin/PFA-fixed paraffin-embedded sections)

Immunohistochemical staining of human prostate cancer tissues (A) and bladder cancer tissues (B) with CAMK2G monoclonal antibody, clone 8G10C1 (Cat# MAB12257) at 1:200-1:1000 dilution.



Enzyme-linked Immunoabsorbent Assay

ELISA analysis of CAMK2G monoclonal antibody, clone 8G10C1 (Cat# MAB12257) at 1:10000 dilution.



Flow Cytometry

Flow cytometric analysis of Jurkat cells with CAMK2G monoclonal antibody, clone 8G10C1 (Cat# MAB12257) at 1:200-1:400 dilution (Green) and negative control (Red).

Specification

Product Description	Mouse monoclonal antibody raised against partial recombinant human CAMK2G.
Immunogen	Recombinant protein corresponding to amino acids 322-481 of human CAMK2G.
Host	Mouse
Theoretical MW (kDa)	62.6

Reactivity	Human, Rat
Form	Liquid
Isotype	IgG1
Recommend Usage	ELISA (1:10000) Flow Cytometry (1:200-1:400) Immunohistochemistry (1:200-1:1000) Western Blot (1:500-1:2000) The optimal working dilution should be determined by the end user.
Storage Buffer	In PBS (0.05% sodium azide)
Storage Instruction	Store at 4°C. For long term storage store at -20°C. Aliquot to avoid repeated freezing and thawing.
Note	This product contains sodium azide: a POISONOUS AND HAZARDOUS SUBSTANCE which should be handled by trained staff only.

Applications

- Western Blot (Cell lysate)

Western blot analysis of Lane 1: PC-12 cell lysate; Lane 2: Jurkat cell lysate; Lane 3: T47D cell lysate; Lane 4: HepG2 cell lysate with CAMK2G monoclonal antibody, clone 8G10C1 (Cat# MAB12257) at 1:500-1:2000 dilution.

- Western Blot (Transfected lysate)

Western blot analysis of Lane 1: Negative control [HEK293 cell lysate]; Lane 2: Over-expression lysate [CAMK2G (AA: 322-481)-hlgGfC transfected HEK293 cells] with CAMK2G monoclonal antibody, clone 8G10C1 (Cat# MAB12257) at 1:500-1:2000 dilution.

- Western Blot (Recombinant protein)

Western blot analysis of human CAMK2G (AA: 322-481) recombinant protein (Expected MW is 44 kDa) with CAMK2G monoclonal antibody, clone 8G10C1 (Cat# MAB12257) at 1:500-1:2000 dilution.

- Immunohistochemistry (Formalin/PFA-fixed paraffin-embedded sections)

Immunohistochemical staining of human prostate cancer tissues (A) and bladder cancer tissues (B) with CAMK2G monoclonal antibody, clone 8G10C1 (Cat# MAB12257) at 1:200-1:1000 dilution.

- Enzyme-linked Immunoabsorbent Assay

ELISA analysis of CAMK2G monoclonal antibody, clone 8G10C1 (Cat# MAB12257) at 1:10000 dilution.

- Flow Cytometry

Flow cytometric analysis of Jurkat cells with CAMK2G monoclonal antibody, clone 8G10C1 (Cat# MAB12257) at 1:200-1:400 dilution (Green) and negative control (Red).

Gene Info — CAMK2G

Entrez GeneID	818
Gene Name	CAMK2G
Gene Alias	CAMK, CAMK-II, CAMKG, FLJ16043, MGC26678
Gene Description	calcium/calmodulin-dependent protein kinase II gamma
Omim ID	602123
Gene Ontology	Hyperlink
Gene Summary	The product of this gene belongs to the Serine/Threonine protein kinase family, and to the Ca(2+)/calmodulin-dependent protein kinase subfamily. Calcium signaling is crucial for several aspects of plasticity at glutamatergic synapses. In mammalian cells the enzyme is composed of four different chains: alpha, beta, gamma, and delta. The product of this gene is a gamma chain. Six alternatively spliced variants that encode six different isoforms have been characterized to date. Additional alternative splice variants that encode different isoforms have been described, but their full-length nature has not been determined. [provided by RefSeq]
Other Designations	CaM kinase II OTTHUMP00000019843 OTTHUMP00000019844 calcium/calmodulin-dependent protein kinase (CaM kinase) II gamma

Pathway

- [Calcium signaling pathway](#)
- [ErbB signaling pathway](#)
- [Glioma](#)
- [GnRH signaling pathway](#)
- [Long-term potentiation](#)
- [Melanogenesis](#)
- [Neurotrophin signaling pathway](#)
- [Olfactory transduction](#)
- [Wnt signaling pathway](#)

Disease

- [Alzheimer disease](#)
- [Cardiovascular Diseases](#)
- [Cerebral Amyloid Angiopathy](#)
- [Diabetes Mellitus](#)
- [Edema](#)
- [Genetic Predisposition to Disease](#)
- [Neuroblastoma](#)