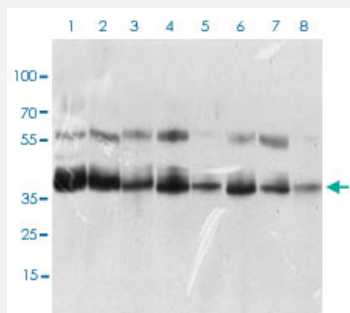


KHDRBS2 monoclonal antibody, clone 7G8C10

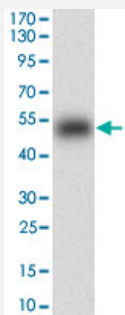
Catalog # MAB12249 Size 100 ug

Applications



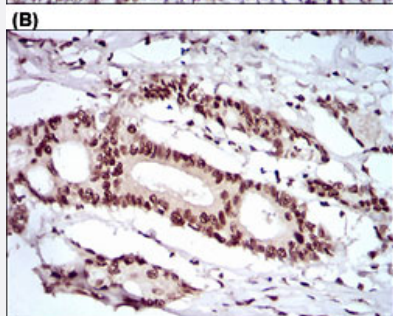
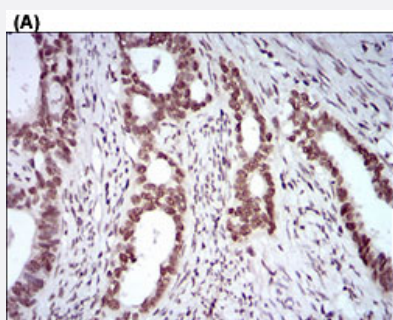
Western Blot (Cell lysate)

Western blot analysis of Lane 1: K562 cell lysate; Lane 2: HEK293 cell lysate; Lane 3: NTERA-2 cell lysate; Lane 4: Hela cell lysate; Lane 5: HepG2 cell lysate; Lane 6: Jurkat cell lysate; Lane 7: A431 cell lysate; Lane 8: NIH/3T3 cell lysate with KHDRBS2 monoclonal antibody, clone 7G8C10 (Cat# MAB12249) at 1:500-1:2000 dilution.



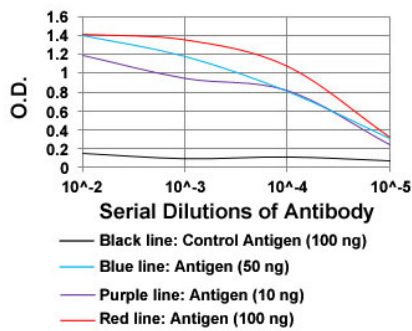
Western Blot (Recombinant protein)

Western blot analysis of human KHDRBS2 (AA: 160-349) recombinant protein (Expected MW is 46.3 kDa) with KHDRBS2 monoclonal antibody, clone 7G8C10 (Cat# MAB12249) at 1:500-1:2000 dilution.



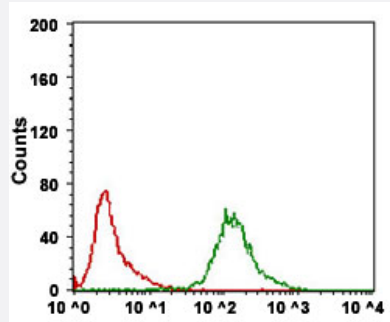
Immunohistochemistry (Formalin/PFA-fixed paraffin-embedded sections)

Immunohistochemical staining of cervical cancer tissues (A) and colon cancer tissues (B) with KHDRBS2 monoclonal antibody, clone 7G8C10 (Cat# MAB12249) at 1:200-1:1000 dilution.



Enzyme-linked Immunoabsorbent Assay

ELISA analysis of KHDRBS2 monoclonal antibody, clone 7G8C10 (Cat# MAB12249) at 1:10000 dilution.



Flow Cytometry

Flow cytometric analysis of K562 cells with KHDRBS2 monoclonal antibody, clone 7G8C10 (Cat# MAB12249) at 1:200-1:400 dilution (Green) and negative control (Red).

Specification

Product Description Mouse monoclonal antibody raised against partial recombinant human KHDRBS2.

Immunogen Recombinant protein corresponding to amino acids 160-349 of human KHDRBS2.

Host Mouse

Theoretical MW (kDa) 39

Reactivity Human, Mouse

Form Liquid

Isotype IgG1

Recommend Usage

- ELISA (1:10000)
- Flow Cytometry (1:200-1:400)
- Immunohistochemistry (1:200-1:1000)
- Western Blot (1:500-1:2000)
- The optimal working dilution should be determined by the end user.

Storage Buffer In PBS (0.05% sodium azide)

Storage Instruction

- Store at 4°C. For long term storage store at -20°C.
- Aliquot to avoid repeated freezing and thawing.

Note

This product contains sodium azide: a POISONOUS AND HAZARDOUS SUBSTANCE which should be handled by trained staff only.

Applications

- Western Blot (Cell lysate)

Western blot analysis of Lane 1: K562 cell lysate; Lane 2: HEK293 cell lysate; Lane 3: NTERA-2 cell lysate; Lane 4: Hela cell lysate; Lane 5: HepG2 cell lysate; Lane 6: Jurkat cell lysate; Lane 7: A431 cell lysate; Lane 8: NIH/3T3 cell lysate with KHDRBS2 monoclonal antibody, clone 7G8C10 (Cat# MAB12249) at 1:500-1:2000 dilution.

- Western Blot (Recombinant protein)

Western blot analysis of human KHDRBS2 (AA: 160-349) recombinant protein (Expected MW is 46.3 kDa) with KHDRBS2 monoclonal antibody, clone 7G8C10 (Cat# MAB12249) at 1:500-1:2000 dilution.

- Immunohistochemistry (Formalin/PFA-fixed paraffin-embedded sections)

Immunohistochemical staining of cervical cancer tissues (A) and colon cancer tissues (B) with KHDRBS2 monoclonal antibody, clone 7G8C10 (Cat# MAB12249) at 1:200-1:1000 dilution.

- Enzyme-linked Immunoabsorbent Assay

ELISA analysis of KHDRBS2 monoclonal antibody, clone 7G8C10 (Cat# MAB12249) at 1:10000 dilution.

- Flow Cytometry

Flow cytometric analysis of K562 cells with KHDRBS2 monoclonal antibody, clone 7G8C10 (Cat# MAB12249) at 1:200-1:400 dilution (Green) and negative control (Red).

Gene Info — KHDRBS2

Entrez GeneID	202559
Gene Name	KHDRBS2
Gene Alias	FLJ38664, MGC26664, SLM-1, SLM1, bA535F17.1
Gene Description	KH domain containing, RNA binding, signal transduction associated 2
Omim ID	610487
Gene Ontology	Hyperlink
Gene Summary	RNA binding
Other Designations	KH domain-containing, RNA-binding, signal transduction-associated protein 2 OTTHUMP00000016670 Sam68-like mammalian protein 1