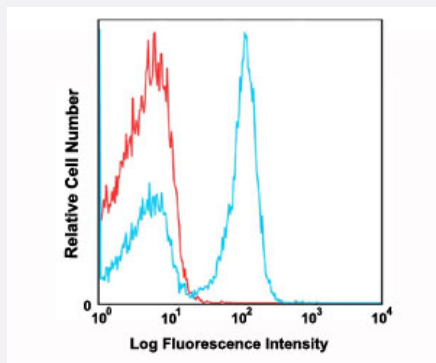


# Cd19 monoclonal antibody, clone 1D3 (FITC)

Catalog # MAB12222      Size 100 ug

## Applications



### Flow Cytometry

Flow cytometric analysis of C57Bl/6 mouse splenocytes using Cd19 monoclonal antibody, clone 1D3 (FITC) (Cat # MAB12222) compared to a relevant isotype control in red.

## Specification

Product Description	Rat monoclonal antibody raised against Cd19.
Immunogen	Cd19
Host	Rat
Reactivity	Mouse
Form	Liquid
Conjugation	FITC
Purification	Affinity Chromatography
Isotype	IgG2a, kappa
Recommend Usage	Flow Cytometry The optimal working dilution should be determined by the end user.
Storage Buffer	In PBS, pH7.2 (0.09% Sodium azide, may contain carrier protein/stabilizer).
Storage Instruction	Store in the dark at 4°C. Avoid prolonged exposure to light. Do not freeze.

**Note**

This product contains sodium azide: a POISONOUS AND HAZARDOUS SUBSTANCE which should be handled by trained staff only.

## Applications

- Flow Cytometry

Flow cytometric analysis of C57Bl/6 mouse splenocytes using Cd19 monoclonal antibody, clone 1D3 (FITC) (Cat # MAB12222) compared to a relevant isotype control in red.

## Gene Info — Cd19

Entrez GeneID	<a href="#">12478</a>
---------------	-----------------------

Gene Name	Cd19
-----------	------

Gene Alias	AW495831
------------	----------

Gene Description	CD19 antigen
------------------	--------------

Gene Ontology	<a href="#">Hyperlink</a>
---------------	---------------------------

Other Designations	-
--------------------	---