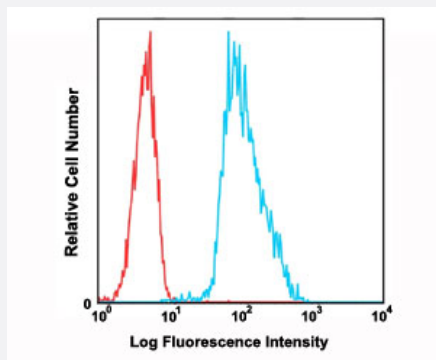


ITGAX monoclonal antibody, clone 3.9 (FITC)

Catalog # MAB12219 Size 100 Reactions

Applications



Flow Cytometry

Flow cytometric analysis of human peripheral blood lymphocytes using ITGAX monoclonal antibody, clone 3.9 (FITC) (Cat # MAB12218) compared to a relevant isotype control in red.

Specification

Product Description	Mouse monoclonal antibody raised against ITGAX.
Immunogen	Native purified from human rheumatoid synovial fluid cells and fibronectin purified human monocytes.
Host	Mouse
Reactivity	Human
Form	Liquid
Conjugation	FITC
Purification	Affinity Chromatography
Isotype	IgG1, kappa
Recommend Usage	Flow Cytometry The optimal working dilution should be determined by the end user.
Storage Buffer	In PBS, pH7.2 (0.09% Sodium azide, may contain carrier protein/stabilizer).
Storage Instruction	Store in the dark at 4°C. Avoid prolonged exposure to light. Do not freeze.

Note

This product contains sodium azide: a POISONOUS AND HAZARDOUS SUBSTANCE which should be handled by trained staff only.

Applications

- Flow Cytometry

Flow cytometric analysis of human peripheral blood lymphocytes using ITGAX monoclonal antibody, clone 3.9 (FITC) (Cat # MAB12218) compared to a relevant isotype control in red.

Gene Info — ITGAX

Entrez GeneID [3687](#)

Gene Name ITGAX

Gene Alias CD11C, SLEB6

Gene Description integrin, alpha X (complement component 3 receptor 4 subunit)

Omim ID [151510](#)

Gene Ontology [Hyperlink](#)

Gene Summary This gene encodes the integrin alpha X chain protein. Integrins are heterodimeric integral membrane proteins composed of an alpha chain and a beta chain. This protein combines with the beta 2 chain (ITGB2) to form a leukocyte-specific integrin referred to as inactivated-C3b (iC3b) receptor 4 (CR4). The alpha X beta 2 complex seems to overlap the properties of the alpha M beta 2 integrin in the adherence of neutrophils and monocytes to stimulated endothelium cells, and in the phagocytosis of complement coated particles. [provided by RefSeq]

Other Designations OTTHUMP00000163299|integrin alpha X|integrin, alpha X (antigen CD11C (p150), alpha polypeptide)|leu M5, alpha subunit|leukocyte surface antigen p150,95, alpha subunit|myeloid membrane antigen, alpha subunit|p150 95 integrin alpha chain

Pathway

- [Regulation of actin cytoskeleton](#)

Disease

- [Genetic Predisposition to Disease](#)

- [Helicobacter Infections](#)
- [Lupus Erythematosus](#)
- [Stomach Ulcer](#)