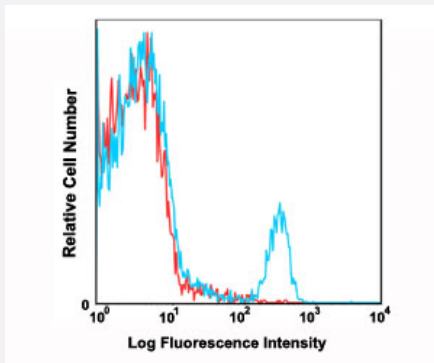


# Cd4 monoclonal antibody, clone RM4-5 (PE/Cy7)

Catalog # MAB12210      Size 100 ug

## Applications



### Flow Cytometry

Flow cytometric analysis of C57Bl/6 mouse splenocytes using Cd4 monoclonal antibody, clone RM4-5 (PE/Cy7) (Cat # MAB12210) compared to a relevant isotype control in red.

## Specification

Product Description	Rat monoclonal antibody raised against Cd4.
Immunogen	Cd4
Host	Rat
Reactivity	Mouse
Form	Liquid
Conjugation	PE/Cy7
Purification	Affinity Chromatography
Isotype	IgG2a, kappa
Recommend Usage	Flow Cytometry The optimal working dilution should be determined by the end user.
Storage Buffer	In PBS, pH7.2 (0.09% Sodium azide, may contain carrier protein/stabilizer).
Storage Instruction	Store in the dark at 4°C. Avoid prolonged exposure to light. Do not freeze.

**Note**

This product contains sodium azide: a POISONOUS AND HAZARDOUS SUBSTANCE which should be handled by trained staff only.

## Applications

- Flow Cytometry

Flow cytometric analysis of C57Bl/6 mouse splenocytes using Cd4 monoclonal antibody, clone RM4-5 (PE/Cy7) (Cat # MAB12210) compared to a relevant isotype control in red.

## Gene Info — Cd4

Entrez GeneID	<a href="#">12504</a>
Gene Name	Cd4
Gene Alias	L3T4, Ly-4
Gene Description	CD4 antigen
Gene Ontology	<a href="#">Hyperlink</a>
Other Designations	OTTMUSP00000027399 T-cell surface glycoprotein CD4 precursor (T-cell surface antigen T4/Leu-3) (T-cell differentiation antigen L3T4)