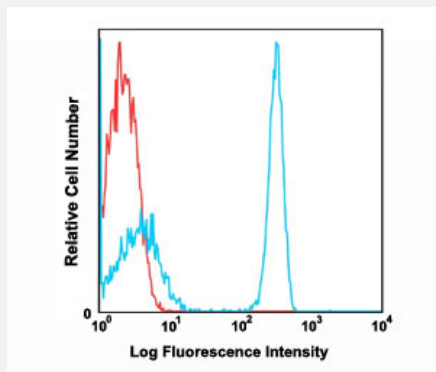


# Cd4 monoclonal antibody, clone RM4-5 (FITC)

Catalog # MAB12209      Size 100 ug

## Applications



### Flow Cytometry

Flow cytometric analysis of C57Bl/6 mouse splenocytes using Cd4 monoclonal antibody, clone RM4-5 (FITC) (Cat # MAB12209) compared to a relevant isotype control in red.

## Specification

Product Description	Rat monoclonal antibody raised against Cd4.
Immunogen	Cd4
Host	Rat
Reactivity	Mouse
Form	Liquid
Conjugation	FITC
Purification	Affinity Chromatography
Isotype	IgG2a, kappa
Recommend Usage	Flow Cytometry The optimal working dilution should be determined by the end user.
Storage Buffer	In PBS, pH7.2 (0.09% Sodium azide, may contain carrier protein/stabilizer).
Storage Instruction	Store in the dark at 4°C. Avoid prolonged exposure to light. Do not freeze.

**Note**

This product contains sodium azide: a POISONOUS AND HAZARDOUS SUBSTANCE which should be handled by trained staff only.

## Applications

- Flow Cytometry

Flow cytometric analysis of C57Bl/6 mouse splenocytes using Cd4 monoclonal antibody, clone RM4-5 (FITC) (Cat # MAB12209) compared to a relevant isotype control in red.

## Gene Info — Cd4

Entrez GeneID	<a href="#">12504</a>
Gene Name	Cd4
Gene Alias	L3T4, Ly-4
Gene Description	CD4 antigen
Gene Ontology	<a href="#">Hyperlink</a>
Other Designations	OTTMUSP00000027399 T-cell surface glycoprotein CD4 precursor (T-cell surface antigen T4/Leu-3) (T-cell differentiation antigen L3T4)