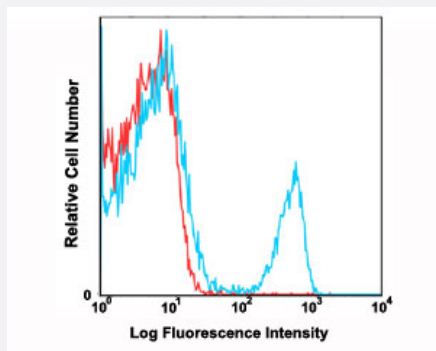


Cd3e monoclonal antibody, clone 145-2C11 (PerCP/Cy5.5)

Catalog # MAB12205 Size 100 ug

Applications



Flow Cytometry

Flow cytometric analysis of C57Bl/6 mouse splenocytes using Cd3e monoclonal antibody, clone 145-2C11 (PerCP/Cy5.5) (Cat # MAB12205) compared to a relevant isotype control in red.

Specification

Product Description	Armenian Hamster monoclonal antibody raised against Cd3e.
Immunogen	Cd3e
Host	Hamster
Reactivity	Mouse
Form	Liquid
Conjugation	PerCP/Cy5.5
Purification	Affinity Chromatography
Isotype	IgG
Recommend Usage	Flow Cytometry The optimal working dilution should be determined by the end user.
Storage Buffer	In PBS, pH7.2 (0.09% Sodium azide, may contain carrier protein/stabilizer).
Storage Instruction	Store in the dark at 4°C. Avoid prolonged exposure to light. Do not freeze.

Note

This product contains sodium azide: a POISONOUS AND HAZARDOUS SUBSTANCE which should be handled by trained staff only.

Applications

- Flow Cytometry

Flow cytometric analysis of C57Bl/6 mouse splenocytes using Cd3e monoclonal antibody, clone 145-2C11 (PerCP/Cy5.5) (Cat # MAB12205) compared to a relevant isotype control in red.

Gene Info — Cd3e

Entrez GeneID	12501
---------------	-----------------------

Gene Name	Cd3e
-----------	------

Gene Alias	AI504783, CD3, CD3epsilon, T3e
------------	--------------------------------

Gene Description	CD3 antigen, epsilon polypeptide
------------------	----------------------------------

Gene Ontology	Hyperlink
---------------	---------------------------

Gene Summary	O
--------------	---

Other Designations	OTTMUSP00000018104
--------------------	--------------------