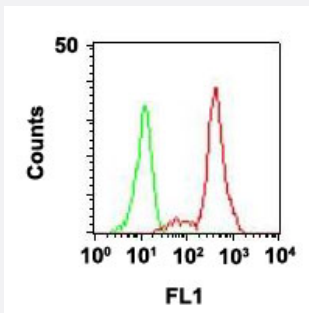


ITGAX monoclonal antibody, clone HC1/1

Catalog # MAB12134 Size 100 ug

Applications



Flow Cytometry

Surface staining of human PBMCs with ITGAX monoclonal antibody, clone HC1/1 (Cat # MAB12134).

Specification

Product Description	Mouse monoclonal antibody raised against human ITGAX.
Immunogen	Human monocytic U937 phorbol ester-treated cells.
Host	Mouse
Theoretical MW (kDa)	145
Reactivity	Human
Form	Liquid
Purification	Protein A/G purification
Isotype	IgG1, kappa
Recommend Usage	Flow Cytometry Immunohistochemistry (0.5-1 ug/mL) The optimal working dilution should be determined by the end user.
Storage Buffer	In PBS (0.05% BSA, 0.05% sodium azide).

Storage Instruction

Store at 4°C.
Aliquot to avoid repeated freezing and thawing.

Note

This product contains sodium azide: a POISONOUS AND HAZARDOUS SUBSTANCE which should be handled by trained staff only.

Applications

- Western Blot
- Immunohistochemistry (Formalin/PFA-fixed paraffin-embedded sections)
- Flow Cytometry

Surface staining of human PBMCs with ITGAX monoclonal antibody, clone HC1/1 (Cat # MAB12134).

Gene Info — ITGAX

Entrez GeneID[3687](#)**Protein Accession#**[P20702](#)**Gene Name**

ITGAX

Gene Alias

CD11C, SLEB6

Gene Description

integrin, alpha X (complement component 3 receptor 4 subunit)

Omim ID[151510](#)**Gene Ontology**[Hyperlink](#)**Gene Summary**

This gene encodes the integrin alpha X chain protein. Integrins are heterodimeric integral membrane proteins composed of an alpha chain and a beta chain. This protein combines with the beta 2 chain (ITGB2) to form a leukocyte-specific integrin referred to as inactivated-C3b (iC3b) receptor 4 (CR4). The alpha X beta 2 complex seems to overlap the properties of the alpha M beta 2 integrin in the adherence of neutrophils and monocytes to stimulated endothelium cells, and in the phagocytosis of complement coated particles. [provided by RefSeq]

Other Designations

OTTHUMP00000163299|integrin alpha X|integrin, alpha X (antigen CD11C (p150), alpha polypeptide)|leu M5, alpha subunit|leukocyte surface antigen p150,95, alpha subunit|myeloid membrane antigen, alpha subunit|p150 95 integrin alpha chain

Pathway

- [Regulation of actin cytoskeleton](#)

Disease

- [Genetic Predisposition to Disease](#)
- [Helicobacter Infections](#)
- [Lupus Erythematosus](#)
- [Stomach Ulcer](#)