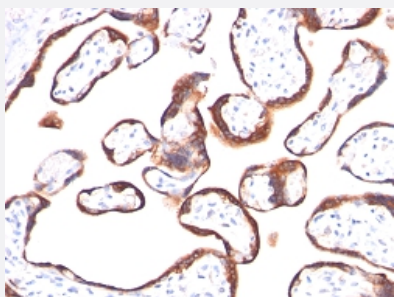


CGB monoclonal antibody, clone HCGb/459

Catalog # MAB12128 Size 100 ug

Applications



Immunohistochemistry (Formalin/PFA-fixed paraffin-embedded sections)

Immunohistochemical staining of human placenta with CGB monoclonal antibody, clone HCGb/459 (Cat # MAB12128).

Specification

Product Description Mouse monoclonal antibody raised against recombinant human CGB.

Immunogen Recombinant protein corresponding to human CGB.

Host Mouse

Theoretical MW (kDa) 22

Reactivity Human

Form Liquid

Purification Protein A/G purification

Isotype IgG1, kappa

Recommend Usage
Immunohistochemistry (0.5-1 ug/mL)
Western blot (0.5-1 ug/mL)
The optimal working dilution should be determined by the end user.

Storage Buffer In PBS (0.05% BSA, 0.05% sodium azide).

Storage Instruction

Store at 4°C.
Aliquot to avoid repeated freezing and thawing.

Note

This product contains sodium azide: a POISONOUS AND HAZARDOUS SUBSTANCE which should be handled by trained staff only.

Applications

- Western Blot
- Immunohistochemistry (Formalin/PFA-fixed paraffin-embedded sections)
Immunohistochemical staining of human placenta with CGB monoclonal antibody, clone HCGb/459 (Cat # MAB12128).

Gene Info — CGB

Entrez GeneID [1082](#)

Protein Accession# [P01233](#)

Gene Name CGB

Gene Alias CGB3, hCGB

Gene Description chorionic gonadotropin, beta polypeptide

Omim ID [118860](#)

Gene Ontology [Hyperlink](#)

Gene Summary This gene is a member of the glycoprotein hormone beta chain family and encodes the beta 3 subunit of chorionic gonadotropin (CG). Glycoprotein hormones are heterodimers consisting of a common alpha subunit and an unique beta subunit which confers biological specificity. CG is produced by the trophoblastic cells of the placenta and stimulates the ovaries to synthesize the steroids that are essential for the maintenance of pregnancy. The beta subunit of CG is encoded by 6 genes which are arranged in tandem and inverted pairs on chromosome 19q13.3 and contiguous with the luteinizing hormone beta subunit gene. [provided by RefSeq]

Other Designations chorionic gonadotropin beta 3 subunit|chorionic gonadotropin beta chain|chorionic gonadotropin beta subunit

Disease

- [Abortion](#)

- [Genetic Predisposition to Disease](#)