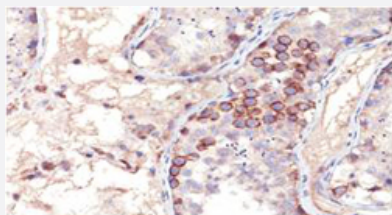


# MAGEA1 monoclonal antibody, clone SPM282

Catalog # MAB12108      Size 100 ug

## Applications



### Immunohistochemistry (Formalin/PFA-fixed paraffin-embedded sections)

Immunohistochemical staining of human testis with MAGEA1 monoclonal antibody, clone SPM282 (Cat # MAB12108).

## Specification

<b>Product Description</b>	Mouse monoclonal antibody raised against MAGEA1.
<b>Immunogen</b>	Recombinant protein corresponding to human full length MAGEA1.
<b>Host</b>	Mouse
<b>Reactivity</b>	Human, Rat
<b>Form</b>	Liquid
<b>Purification</b>	Protein A/G purification
<b>Isotype</b>	IgG1, kappa
<b>Recommend Usage</b>	Immunohistochemistry (0.5-1 ug/mL) Western blot (0.5-1 ug/mL) The optimal working dilution should be determined by the end user.
<b>Storage Buffer</b>	In PBS (0.05% BSA, 0.05% sodium azide).
<b>Storage Instruction</b>	Store at 4°C. Aliquot to avoid repeated freezing and thawing.

## Note

This product contains sodium azide: a POISONOUS AND HAZARDOUS SUBSTANCE which should be handled by trained staff only.

## Applications

- Western Blot
- Immunohistochemistry (Formalin/PFA-fixed paraffin-embedded sections)

Immunohistochemical staining of human testis with MAGEA1 monoclonal antibody, clone SPM282 (Cat # MAB12108).

## Gene Info — MAGEA1

Entrez GeneID [4100](#)

Protein Accession# [P43355](#)

Gene Name MAGEA1

Gene Alias MAGE1, MGC9326

Gene Description melanoma antigen family A, 1 (directs expression of antigen MZ2-E)

Omim ID [300016](#)

Gene Ontology [Hyperlink](#)

**Gene Summary** This gene is a member of the MAGEA gene family. The members of this family encode proteins with 50 to 80% sequence identity to each other. The promoters and first exons of the MAGEA genes show considerable variability, suggesting that the existence of this gene family enables the same function to be expressed under different transcriptional controls. The MAGEA genes are clustered at chromosomal location Xq28. They have been implicated in some hereditary disorders, such as dyskeratosis congenita. [provided by RefSeq]

**Other Designations** OTTHUMP00000025911|melanoma antigen MAGE-1|melanoma antigen family A 1|melanoma antigen family A, 1|melanoma-associated antigen 1|melanoma-associated antigen MZ2-E