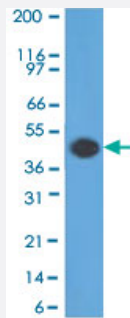


# GFAP monoclonal antibody, clone SPM248

Catalog # MAB12090

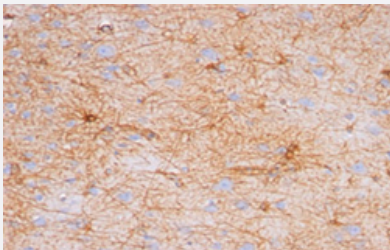
Size 100 ug

## Applications



### Western Blot (Tissue lysate)

Western blot analysis of human brain lysate with GFAP monoclonal antibody, clone SPM248 (Cat # MAB12090).



### Immunohistochemistry (Formalin/PFA-fixed paraffin-embedded sections)

Immunohistochemical staining of human brain with GFAP monoclonal antibody, clone SPM248 (Cat # MAB12090).

## Specification

**Product Description** Mouse monoclonal antibody raised against GFAP.

**Immunogen** Native protein corresponding to pig GFAP.

**Host** Mouse

**Reactivity** Human, Mouse, Pig, Rabbit, Rat

**Form** Liquid

**Purification** Protein A/G purification

**Isotype** IgG1

<b>Recommend Usage</b>	Immunohistochemistry (0.5-1 ug/mL) Western blot (1:100-1:200) The optimal working dilution should be determined by the end user.
<b>Storage Buffer</b>	In PBS (0.05% BSA, 0.05% sodium azide).
<b>Storage Instruction</b>	Store at 4°C. Aliquot to avoid repeated freezing and thawing.
<b>Note</b>	This product contains sodium azide: a POISONOUS AND HAZARDOUS SUBSTANCE which should be handled by trained staff only.

## Applications

- Western Blot (Tissue lysate)

Western blot analysis of human brain lysate with GFAP monoclonal antibody, clone SPM248 (Cat # MAB12090).

- Immunohistochemistry (Formalin/PFA-fixed paraffin-embedded sections)

Immunohistochemical staining of human brain with GFAP monoclonal antibody, clone SPM248 (Cat # MAB12090).

## Gene Info — GFAP

<b>Entrez GeneID</b>	<a href="#">396562</a>
----------------------	------------------------

<b>Gene Name</b>	GFAP
------------------	------

<b>Gene Alias</b>	-
-------------------	---

<b>Gene Description</b>	glial fibrillary acidic protein
-------------------------	---------------------------------

<b>Gene Ontology</b>	<a href="#">Hyperlink</a>
----------------------	---------------------------

<b>Other Designations</b>	-
---------------------------	---