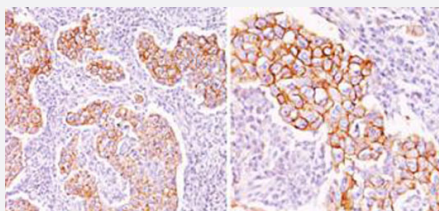


Phosphotyrosine monoclonal antibody, clone PY20

Catalog # MAB11325 Size 100 ug

Applications



Immunohistochemistry (Formalin/PFA-fixed paraffin-embedded sections)

Immunohistochemical staining (Formalin-fixed paraffin-embedded sections) analysis of human breast with Phosphotyrosine monoclonal antibody, clone PY20 (Cat # MAB11325) at 1:50 using peroxidase-conjugate and DAB chromogen (Note: specific cell surface and cytoplasmic staining).

Specification

Product Description	Mouse monoclonal antibody raised against Phosphotyrosine.
Immunogen	Phosphotyrosine conjugated to KLH.
Host	Mouse
Specificity	This MAb shows no cross-reaction with other phosphoamino acids and is superb for multiple applications including staining of formalin/paraffin tissues.
Form	Liquid
Purification	Protein A/G purification
Isotype	IgG2b, kappa
Recommend Usage	<p>Flow Cytometry (1-2 ug/million cells)</p> <p>Immunofluorescence (1-2 ug/mL)</p> <p>Immunohistochemistry (Formalin/PFA-fixed paraffin-embedded sections) (1-2 ug/mL for 30 minutes at RT) (No pretreatment is required for staining of formalin-fixed, paraffin-embedded tissues))</p> <p>Immunoprecipitation (1-2 ug/500 ug protein lysate)</p> <p>Western Blot (1-2 ug/mL)</p> <p>The optimal working dilution should be determined by the end user.</p>

Storage Buffer	In PBS (0.05% BSA, 0.05% sodium azide).
Storage Instruction	Store at 4°C.
Note	This product contains sodium azide: a POISONOUS AND HAZARDOUS SUBSTANCE which should be handled by trained staff only.

Applications

- Western Blot
- Immunohistochemistry (Formalin/PFA-fixed paraffin-embedded sections)

Immunohistochemical staining (Formalin-fixed paraffin-embedded sections) analysis of human breast with Phosphotyrosine monoclonal antibody, clone PY20 (Cat # MAB11325) at 1:50 using peroxidase-conjugate and DAB chromogen (Note: specific cell surface and cytoplasmic staining).

- Immunofluorescence
- Immunoprecipitation
- Flow Cytometry