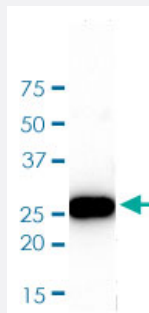


GST monoclonal antibody, clone 1E5

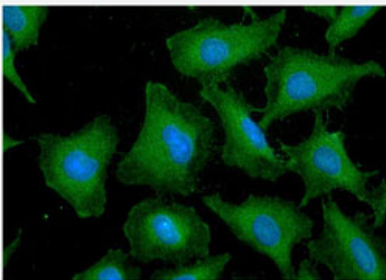
Catalog # MAB1132 Size 100 uL

Applications



Western Blot (Recombinant protein)

Western blot analysis of recombinant protein GST (50 ng, 28kDa) was resolved by SDS-PAGE, transferred to PVDF membrane and probed with GST monoclonal antibody, clone 1E5 (1:1000).



Immunofluorescence

Immunofluorescence analysis of HeLa cells. The cell was stained with GST monoclonal antibody, clone 1E5 (1:100). The secondary antibody (green) was used Alexa Fluor 488. DAPI was stained the cell nucleus (blue).

Specification

Product Description	Mouse monoclonal antibody raised against recombinant human GST.
Immunogen	Recombinant protein corresponding to human GST.
Host	Mouse
Reactivity	Human
Form	Liquid
Purification	Protein G purification
Isotype	IgG2b, kappa

Recommend Usage	ELISA
	Immunocytochemistry (1:100)
	Immunofluorescence (1:100)
	Western Blot
	The optimal working dilution should be determined by the end user.
Storage Buffer	In PBS, pH 7.4 (10% glycerol, 0.02% sodium azide).
Storage Instruction	Store at 2°C to 8°C for 1 week. For long term storage, aliquot and store at -20°C to -80°C. Aliquot to avoid repeated freezing and thawing.
Note	This product contains sodium azide: a POISONOUS AND HAZARDOUS SUBSTANCE which should be handled by trained staff only.

Applications

- Western Blot (Recombinant protein)

Western blot analysis of recombinant protein GST (50 ng, 28kDa) was resolved by SDS-PAGE, transferred to PVDF membrane and probed with GST monoclonal antibody, clone 1E5 (1:1000).

- Immunocytochemistry

- Immunofluorescence

Immunofluorescence analysis of HeLa cells. The cell was stained with GST monoclonal antibody, clone 1E5 (1:100). The secondary antibody (green) was used Alexa Fluor 488. DAPI was stained the cell nucleus (blue).

- Enzyme-linked Immunoabsorbent Assay

Publication Reference

- [A Novel Function of Novobiocin: Disrupting the Interaction of HIF 1α and p300/CBP through Direct Binding to the HIF1α C-Terminal Activation Domain.](#)

Wu D, Zhang R, Zhao R, Chen G, Cai Y, Jin J.

PLoS One 2013 May; 8(5):e62014.

Application: WB-Ce, Human, HeLa cells

- [Conventional immunoassays underestimate anti-GST antibody titre.](#)

Cartwright GA, Rothel JS, Lightowlers MW.

Journal of Immunological Methods 1995 Feb; 179(1):31.

Application: C-ELISA, ELISA, N/A, Recombinant protein

- [A non-radioactive assay for the detection and quantitation of a DNA binding protein.](#)

Hibma MH, Ely SJ, Crawford L.

Nucleic Acids Research 1994 Sep; 22(18):3806.

- [Mr 26,000 antigen of Schistosoma japonicum recognized by resistant WEHI 129/J mice is a parasite glutathione S-transferase.](#)

Smith DB, Davern KM, Board PG, Tiu WU, Garcia EG, Mitchell GF.

PNAS 1986 Nov; 83(22):8703.