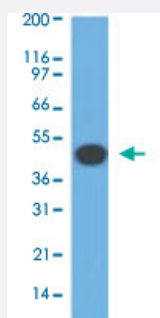


# KRT18 monoclonal antibody, clone DA7

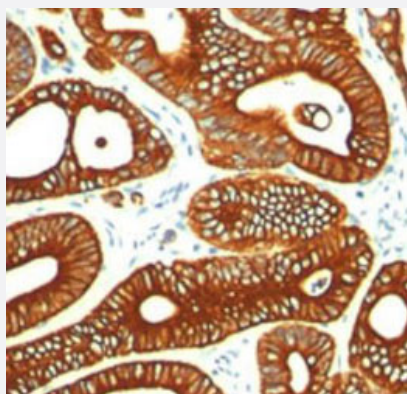
Catalog # MAB11308      Size 100 ug

## Applications



### Western Blot (Cell lysate)

Western blot analysis of HeLa cell lysate using KRT18 monoclonal antibody, clone DA7 (Cat # MAB11308) at 1 ug/ml.



### Immunohistochemistry (Formalin/PFA-fixed paraffin-embedded sections)

Immunohistochemical staining (Formalin-fixed paraffin-embedded sections) analysis of human colon cancer with KRT18 monoclonal antibody, clone DA7 (Cat # MAB11308) at 1:200 using peroxidase-conjugate and DAB chromogen (Note: cytoplasmic staining of tumor cells).

## Specification

Product Description	Mouse monoclonal antibody raised against KRT18.
Immunogen	Human breast cancer PMC 42 cells.
Host	Mouse
Reactivity	Human
Form	Liquid
Purification	Protein G purification

Isotype	IgG1, kappa
Recommend Usage	Western Blot (1-3 ug/ml) Immunocytochemistry/Immunofluorescence (1:10 - 1:2000) Immunohistochemistry (Formalin/PFA-fixed paraffin-embedded sections) (1:200 - 1:400) Immunoprecipitation (1:10 - 1:500) The optimal working dilution should be determined by the end user.
Storage Buffer	In PBS (0.05% BSA, 0.05% sodium azide)
Storage Instruction	Store at 4°C. For long term storage store at -20°C. Aliquot to avoid repeated freezing and thawing.
Note	This product contains sodium azide: a POISONOUS AND HAZARDOUS SUBSTANCE which should be handled by trained staff only.

## Applications

- Western Blot (Cell lysate)

Western blot analysis of HeLa cell lysate using KRT18 monoclonal antibody, clone DA7 (Cat # MAB11308) at 1 ug/ml.

- Immunohistochemistry (Formalin/PFA-fixed paraffin-embedded sections)

Immunohistochemical staining (Formalin-fixed paraffin-embedded sections) analysis of human colon cancer with KRT18 monoclonal antibody, clone DA7 (Cat # MAB11308) at 1:200 using peroxidase-conjugate and DAB chromogen (Note: cytoplasmic staining of tumor cells).

- Immunocytochemistry

- Immunofluorescence

- Immunoprecipitation

## Gene Info — KRT18

Entrez GeneID	<a href="#">3875</a>
Gene Name	KRT18
Gene Alias	CYK18, K18
Gene Description	keratin 18
Omim ID	<a href="#">148070</a> <a href="#">215600</a>

## Gene Ontology

[Hyperlink](#)

## Gene Summary

KRT18 encodes the type I intermediate filament chain keratin 18. Keratin 18, together with its filament partner keratin 8, are perhaps the most commonly found members of the intermediate filament gene family. They are expressed in single layer epithelial tissues of the body. Mutations in this gene have been linked to cryptogenic cirrhosis. Two transcript variants encoding the same protein have been found for this gene. [provided by RefSeq]

## Other Designations

cell proliferation-inducing protein 46|cytokeratin 18

## Pathway

- [Pathogenic Escherichia coli infection - EHEC](#)

## Disease

- [Cleft Lip](#)
- [Cleft Palate](#)
- [Drug-Induced Liver Injury](#)
- [Genetic Predisposition to Disease](#)
- [Liver Cirrhosis](#)
- [Liver Failure](#)