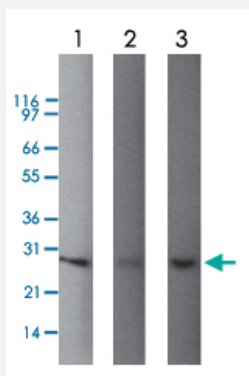


UCHL1 monoclonal antibody, clone 31A3

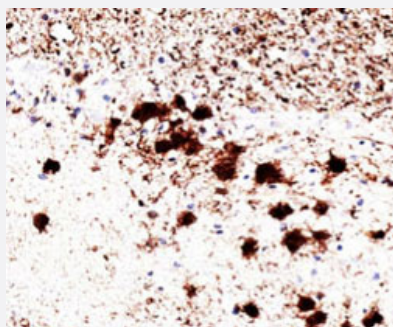
Catalog # MAB11258 Size 100 ug

Applications



Western Blot (Tissue lysate)

Western blot analysis of brain tissue lysates by UCHL1 monoclonal antibody, clone 31A3 (Cat # MAB11258) at 1 ug/ml. Lane1 : Human. Lane2 : Mouse. Lane3 : Rat.



Immunohistochemistry (Formalin/PFA-fixed paraffin-embedded sections)

Immunohistochemical staining of human brain with UCHL1 monoclonal antibody, clone 31A3 (Cat # MAB11258) at 1:500 dilution.

Specification

Product Description	Mouse monoclonal antibody raised against UCHL1.
Immunogen	Native UCHL1 from human brain.
Host	Mouse
Reactivity	Bovine, Human, Mouse, Pig, Rat
Form	Liquid
Purification	Protein G purification

Isotype	IgG1 Kappa
Recommend Usage	Immunohistochemistry (Formalin/PFA-fixed paraffin-embedded sections) (1:250-1:500) Western Blot (1-3 ug/ml) The optimal working dilution should be determined by the end user.
Storage Buffer	In PBS (0.05% BSA, 0.05% sodium azide)
Storage Instruction	Store at 4°C.
Note	This product contains sodium azide: a POISONOUS AND HAZARDOUS SUBSTANCE which should be handled by trained staff only.

Applications

- Western Blot (Tissue lysate)

Western blot analysis of brain tissue lysates by UCHL1 monoclonal antibody, clone 31A3 (Cat # MAB11258) at 1 ug/ml. Lane1 : Human. Lane2 : Mouse. Lane3 : Rat.

- Immunohistochemistry (Formalin/PFA-fixed paraffin-embedded sections)

Immunohistochemical staining of human brain with UCHL1 monoclonal antibody, clone 31A3 (Cat # MAB11258) at 1:500 dilution.

- Immunohistochemistry (Frozen sections)

- Enzyme-linked Immunoabsorbent Assay

Gene Info — UCHL1

Entrez GeneID	7345
Protein Accession#	NP_004172
Gene Name	UCHL1
Gene Alias	PARK5, PGP9.5, Uch-L1
Gene Description	ubiquitin carboxyl-terminal esterase L1 (ubiquitin thiolesterase)
Omim ID	168600 191342
Gene Ontology	Hyperlink

Gene Summary

The protein encoded by this gene belongs to the peptidase C12 family. This enzyme is a thiol protease that hydrolyzes a peptide bond at the C-terminal glycine of ubiquitin. This gene is specifically expressed in the neurons and in cells of the diffuse neuroendocrine system. Mutations in this gene may be associated with Parkinson disease

Other Designations

ubiquitin C-terminal esterase L1|ubiquitin carboxyl-terminal esterase L1|ubiquitin thiolesterase L1

Disease

- [Alzheimer disease](#)
- [Genetic Predisposition to Disease](#)
- [Huntington disease](#)
- [Movement Disorders](#)
- [Multiple System Atrophy](#)
- [Parkinson disease](#)
- [Parkinsonian Disorders](#)