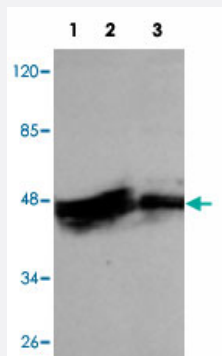


# KRT7 monoclonal antibody

Catalog # MAB11153      Size 100 ug

## Applications



### Western Blot (Cell lysate)

Western blot analysis of KRT7 monoclonal antibody (Cat # MAB11153) at 1:100 dilution.

Lane 1: A-459 whole cell lysate 40 ug/lane.

Lane 2: A-431 whole cell lysate 40 ug/lane.

Lane 3: HeLa whole cell lysate 40 ug/lane.

Predicted band size: 50 KDa. Observed band size: 50 KDa.

## Specification

**Product Description** Mouse monoclonal antibody raised against partial recombinant protein of KRT7.

**Immunogen** Recombinant protein corresponding to N-terminus of human KRT7.

**Host** Mouse

**Reactivity** Human

**Form** Liquid

**Purification** Protein G purification

**Recommend Usage** ELISA (1:5000-1:20000)  
Western Blot (1:100-1:2000)  
The optimal working dilution should be determined by the end user.

**Storage Buffer** In PBS, pH 7.4 (50% glycerol, 0.02% sodium azide)

**Storage Instruction** Store at -20°C.  
Aliquot to avoid repeated freezing and thawing.

**Note**

This product contains sodium azide: a POISONOUS AND HAZARDOUS SUBSTANCE which should be handled by trained staff only.

## Applications

- Western Blot (Cell lysate)

Western blot analysis of KRT7 monoclonal antibody (Cat # MAB11153) at 1:100 dilution.

Lane 1: A-459 whole cell lysate 40 ug/lane.

Lane 2: A-431 whole cell lysate 40 ug/lane.

Lane 3: HeLa whole cell lysate 40 ug/lane.

Predicted band size: 50 KDa. Observed band size: 50 KDa.

- Enzyme-linked Immunoabsorbent Assay

## Gene Info — KRT7

Entrez GeneID	<a href="#">3855</a>
---------------	----------------------

Protein Accession#	<a href="#">NM_005556.3</a>
--------------------	-----------------------------

Gene Name	KRT7
-----------	------

Gene Alias	CK7, K2C7, K7, MGC129731, MGC3625, SCL
------------	--

Gene Description	keratin 7
------------------	-----------

Omim ID	<a href="#">148059</a>
---------	------------------------

Gene Ontology	<a href="#">Hyperlink</a>
---------------	---------------------------

Gene Summary	The protein encoded by this gene is a member of the keratin gene family. The type II cytokeratins consist of basic or neutral proteins which are arranged in pairs of heterotypic keratin chains coexpressed during differentiation of simple and stratified epithelial tissues. This type II cytokeratin is specifically expressed in the simple epithelia lining the cavities of the internal organs and in the gland ducts and blood vessels. The genes encoding the type II cytokeratins are clustered in a region of chromosome 12q12-q13. Alternative splicing may result in several transcript variants; however, not all variants have been fully described. [provided by RefSeq]
--------------	---

Other Designations	cytokeratin 7 keratin, 55K type II cytoskeletal keratin, simple epithelial type I, K7 keratin, type II cytoskeletal 7 sarcolectin type II mesothelial keratin K7
--------------------	--