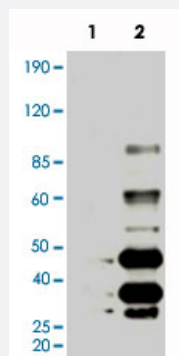


KSHV K8 monoclonal antibody, clone 8C12G10G1

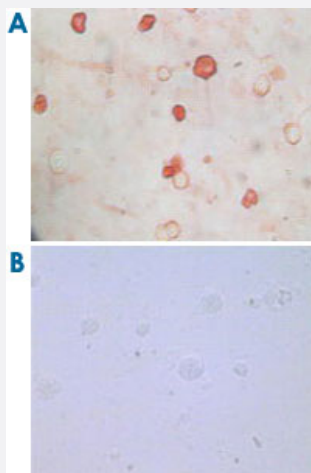
Catalog # MAB10847 Size 100 uL

Applications



Western Blot (Cell lysate)

Western blot analysis using KSHV K8 monoclonal antibody, clone 8C12G10G1 (Cat # MAB10847) against BCBL-1 (1) and TPA induced BCBL-1 (2) cell lysate.



Immunocytochemistry

Immunocytochemistry analysis of TPA induced BCBL-1 cells (A) and uninduced BCBL-1 cells (B) using KSHV K8 monoclonal antibody, clone 8C12G10G1 (Cat # MAB10847) with AEC staining.

Specification

Product Description	Mouse monoclonal antibody raised against partial recombinant KSHV K8.
Immunogen	Recombinant protein corresponding to Kaposi's sarcoma-associated herpesvirus (KSHV) K8.
Host	Mouse
Form	Liquid
Isotype	IgG2a

Recommend Usage	ELISA (1:10000) Western Blot (1:500-1:2000) Immunofluorescence (1:200-1:1000) The optimal working dilution should be determined by the end user.
Storage Buffer	In ascites (0.03% sodium azide)
Storage Instruction	Store at 4°C. For long term storage store at -20°C. Aliquot to avoid repeated freezing and thawing.
Note	This product contains sodium azide: a POISONOUS AND HAZARDOUS SUBSTANCE which should be handled by trained staff only.

Applications

- Western Blot (Cell lysate)

Western blot analysis using KSHV K8 monoclonal antibody, clone 8C12G10G1 (Cat # MAB10847) against BCBL-1 (1) and TPA induced BCBL-1 (2) cell lysate.

- Immunocytochemistry

Immunocytochemistry analysis of TPA induced BCBL-1 cells (A) and uninduced BCBL-1 cells (B) using KSHV K8 monoclonal antibody, clone 8C12G10G1 (Cat # MAB10847) with AEC staining.

- Immunofluorescence

- Enzyme-linked Immunoabsorbent Assay

Gene Info — K8

Entrez GeneID	4961462
Gene Name	K8
Gene Alias	-
Gene Description	bZIP transcription factor
Gene Ontology	Hyperlink
Other Designations	-

Publication Reference

- [Concurrent Control of KSHV Life Cycle through Chromatin Modulation and Host Hedgehog Signaling: A New Prospect to the Therapeutic Potential of Lipoxin A4.](#)

Asha K, Balfe N, Sharma-Walia N.

Journal of Virology 2020 Feb; 94(9):e02177-19.

Application: WB, Viruses, KSHV-infected BCBL-1 cells