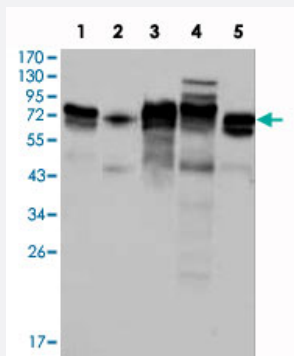


MTDH monoclonal antibody, clone 2F11C3

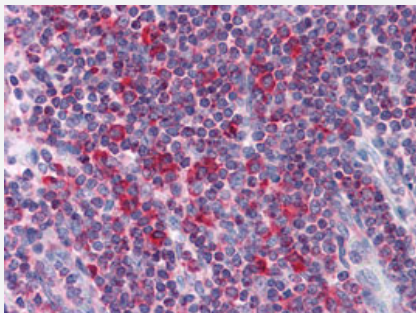
Catalog # MAB10817 Size 100 uL

Applications



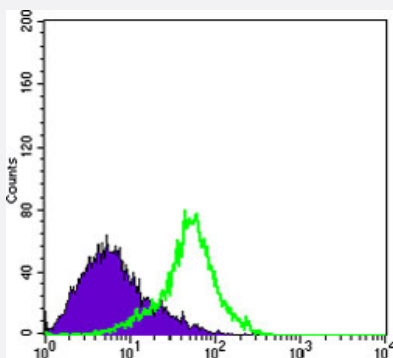
Western Blot (Cell lysate)

Western blot analysis using MTDH monoclonal antibody, clone 2F11C3 (Cat # MAB10817) against K-562 (1), SKBR-3 (2), T-47D (3), HeLa (4) and MCF-7 (5) cell lysate.



Immunohistochemistry (Formalin/PFA-fixed paraffin-embedded sections)

Immunohistochemical analysis of paraffin-embedded human liver tissues using MTDH monoclonal antibody, clone 2F11C3 (Cat # MAB10817).



Flow Cytometry

Flow cytometric analysis of HeLa cells using MTDH monoclonal antibody, clone 2F11C3 (Cat # MAB10817) (green) and negative control (purple).

Specification

Product Description

Mouse monoclonal antibody raised against partial recombinant MTDH.

Immunogen	Recombinant protein corresponding to human MTDH.
Host	Mouse
Reactivity	Human
Form	Liquid
Purification	Protein G purification
Isotype	IgG1
Recommend Usage	ELISA (1:10000) Western Blot (1:500-1:2000) Immunohistochemistry (1:200-1:1000) Flow cytometry (1:200-1:400) The optimal working dilution should be determined by the end user.
Storage Buffer	In PBS (50% glycerol, 0.03% sodium azide)
Storage Instruction	Store at 4°C. For long term storage store at -20°C. Aliquot to avoid repeated freezing and thawing.
Note	This product contains sodium azide: a POISONOUS AND HAZARDOUS SUBSTANCE which should be handled by trained staff only.

Applications

- Western Blot (Cell lysate)

Western blot analysis using MTDH monoclonal antibody, clone 2F11C3 (Cat # MAB10817) against K-562 (1), SKBR-3 (2), T-47D (3), HeLa (4) and MCF-7 (5) cell lysate.

- Immunohistochemistry (Formalin/PFA-fixed paraffin-embedded sections)

Immunohistochemical analysis of paraffin-embedded human liver tissues using MTDH monoclonal antibody, clone 2F11C3 (Cat # MAB10817).

- Enzyme-linked Immunoabsorbent Assay

- Flow Cytometry

Flow cytometric analysis of HeLa cells using MTDH monoclonal antibody, clone 2F11C3 (Cat # MAB10817) (green) and negative control (purple).

Gene Info — MTDH

Entrez GeneID	92140
Gene Name	MTDH
Gene Alias	3D3, AEG-1, AEG1, LYRIC
Gene Description	metadherin
Omim ID	610323
Gene Ontology	Hyperlink
Other Designations	LYRIC/3D3 astrocyte elevated gene-1 metastasis adhesion protein

Disease

- [Genetic Predisposition to Disease](#)
- [Migraine Disorders](#)