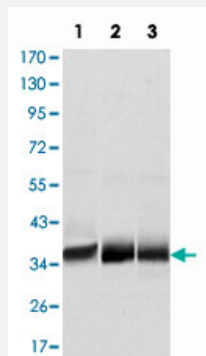


# MSI2 monoclonal antibody, clone 2C11

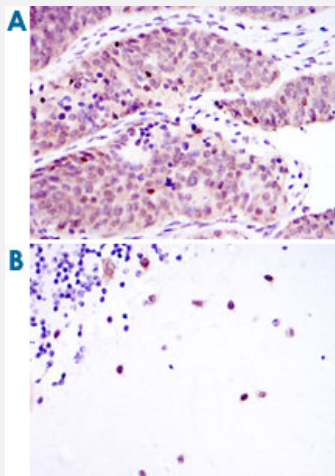
Catalog # MAB10815 Size 100 uL

## Applications



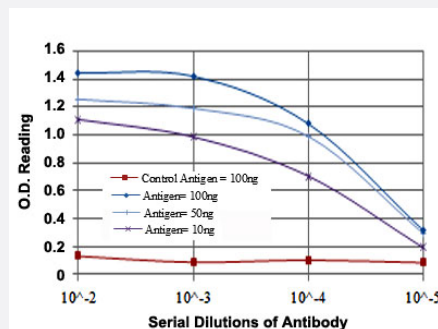
### Western Blot (Cell lysate)

Western blot analysis using MSI2 monoclonal antibody, clone 2C11 (Cat # MAB10815) against NTERA-2 (1), SW620 (2) and T-47D (3) cell lysate.



### Immunohistochemistry (Formalin/PFA-fixed paraffin-embedded sections)

Immunohistochemical analysis of paraffin-embedded human ovarian cancer (A) and cerebellum tissues (B) using MSI2 monoclonal antibody, clone 2C11 (Cat # MAB10815) with DAB staining.



### Enzyme-linked Immunoabsorbent Assay

ELISA measurement of MSI2 monoclonal antibody, clone 2C11 (Cat # MAB10815).

## Specification

Product Description	Mouse monoclonal antibody raised against partial recombinant MSI2.
Immunogen	Recombinant protein corresponding to human MSI2.
Host	Mouse
Reactivity	Human
Form	Liquid
Isotype	IgG1
Recommend Usage	ELISA (1:10000) Western Blot (1:500-1:2000) Immunohistochemistry (1:200-1:1000) The optimal working dilution should be determined by the end user.
Storage Buffer	In ascites (0.03% sodium azide)
Storage Instruction	Store at 4°C. For long term storage store at -20°C. Aliquot to avoid repeated freezing and thawing.
Note	This product contains sodium azide: a POISONOUS AND HAZARDOUS SUBSTANCE which should be handled by trained staff only.

## Applications

- Western Blot (Cell lysate)

Western blot analysis using MSI2 monoclonal antibody, clone 2C11 (Cat # MAB10815) against NTERA-2 (1), SW620 (2) and T-47D (3) cell lysate.

- Immunohistochemistry (Formalin/PFA-fixed paraffin-embedded sections)

Immunohistochemical analysis of paraffin-embedded human ovarian cancer (A) and cerebellum tissues (B) using MSI2 monoclonal antibody, clone 2C11 (Cat # MAB10815) with DAB staining.

- Enzyme-linked Immunoabsorbent Assay

ELISA measurement of MSI2 monoclonal antibody, clone 2C11 (Cat # MAB10815).

## Gene Info — MSI2

Entrez GeneID	<a href="#">124540</a>
Gene Name	MSI2
Gene Alias	FLJ36569, MGC3245, MSI2H

Gene Description	musashi homolog 2 (Drosophila)
Omim ID	<a href="#">607897</a>
Gene Ontology	<a href="#">Hyperlink</a>
Gene Summary	This gene encodes a protein containing two conserved tandem RNA recognition motifs. Similar proteins in other species function as RNA-binding proteins and play central roles in posttranscriptional gene regulation. Two transcript variants encoding distinct isoforms have been identified for this gene. [provided by RefSeq]
Other Designations	musashi 2

## Disease

- [Cardiovascular Diseases](#)
- [Diabetes Mellitus](#)
- [Edema](#)
- [Tobacco Use Disorder](#)