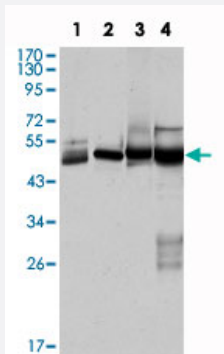


KRT7 monoclonal antibody, clone 5D12

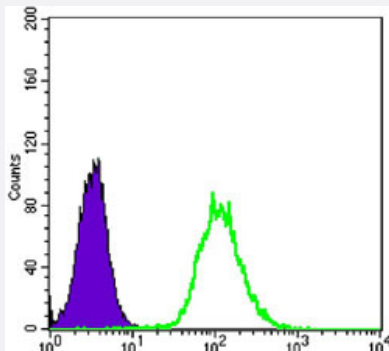
Catalog # MAB10787 Size 100 uL

Applications



Western Blot (Cell lysate)

Western blot analysis using KRT7 monoclonal antibody, clone 5D12 (Cat # MAB10787) against HeLa (1), MCF-7 (2), A-431 (3) and A-549 (4) cell lysate.



Flow Cytometry

Flow cytometric analysis of HeLa cells using KRT7 monoclonal antibody, clone 5D12 (Cat # MAB10787) (green) and negative control (purple).

Specification

Product Description	Mouse monoclonal antibody raised against partial recombinant KRT7.
Immunogen	Recombinant protein corresponding to human KRT7.
Host	Mouse
Reactivity	Human
Form	Liquid
Isotype	IgG1

Recommend Usage	ELISA (1:10000) Western Blot (1:500-1:2000) Flow cytometry (1:200-1:400) The optimal working dilution should be determined by the end user.
Storage Buffer	In ascites (0.03% sodium azide)
Storage Instruction	Store at 4°C. For long term storage store at -20°C. Aliquot to avoid repeated freezing and thawing.
Note	This product contains sodium azide: a POISONOUS AND HAZARDOUS SUBSTANCE which should be handled by trained staff only.

Applications

- Western Blot (Cell lysate)

Western blot analysis using KRT7 monoclonal antibody, clone 5D12 (Cat # MAB10787) against HeLa (1), MCF-7 (2), A-431 (3) and A-549 (4) cell lysate.

- Enzyme-linked Immunoabsorbent Assay

- Flow Cytometry

Flow cytometric analysis of HeLa cells using KRT7 monoclonal antibody, clone 5D12 (Cat # MAB10787) (green) and negative control (purple).

Gene Info — KRT7

Entrez GeneID	3855
Gene Name	KRT7
Gene Alias	CK7, K2C7, K7, MGC129731, MGC3625, SCL
Gene Description	keratin 7
Omim ID	148059
Gene Ontology	Hyperlink

Gene Summary

The protein encoded by this gene is a member of the keratin gene family. The type II cytokeratins consist of basic or neutral proteins which are arranged in pairs of heterotypic keratin chains coexpressed during differentiation of simple and stratified epithelial tissues. This type II cytokeratin is specifically expressed in the simple epithelia lining the cavities of the internal organs and in the gland ducts and blood vessels. The genes encoding the type II cytokeratins are clustered in a region of chromosome 12q12-q13. Alternative splicing may result in several transcript variants; however, not all variants have been fully described. [provided by RefSeq]

Other Designations

cytokeratin 7|keratin, 55K type II cytoskeletal|keratin, simple epithelial type I, K7|keratin, type II cytoskeletal 7|sarcolectin|type II mesothelial keratin K7