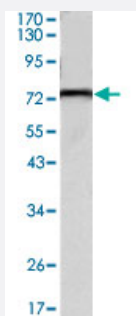


# KLHL22 monoclonal antibody, clone 7B10

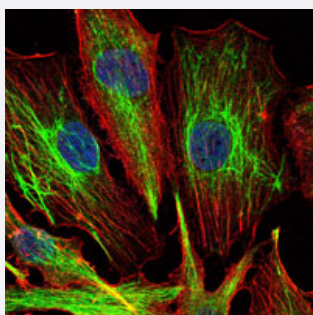
Catalog # MAB10722      Size 100 uL

## Applications



### Western Blot (Tissue lysate)

Western blot analysis using KLHL22 monoclonal antibody, clone 7B10 (Cat # MAB10722) against mouse brain tissues lysate.



### Immunofluorescence

Immunofluorescence analysis of U251 cells using KLHL22 monoclonal antibody, clone 7B10 (Cat # MAB10722) (green) . Blue: DRAQ5 fluorescent DNA dye. Red: Actin filaments have been labeled with Alexa Fluor-555 phalloidin.

## Specification

Product Description	Mouse monoclonal antibody raised against partial recombinant KLHL22.
Immunogen	Recombinant protein corresponding to human KLHL22.
Host	Mouse
Theoretical MW (kDa)	72
Reactivity	Human
Form	Liquid
Isotype	IgG1

<b>Recommend Usage</b>	ELISA (1:10000) Western Blot (1:500-1:2000) Immunofluorescence (1:200-1:1000) The optimal working dilution should be determined by the end user.
<b>Storage Buffer</b>	In ascites (0.03% sodium azide)
<b>Storage Instruction</b>	Store at 4°C. For long term storage store at -20°C. Aliquot to avoid repeated freezing and thawing.
<b>Note</b>	This product contains sodium azide: a POISONOUS AND HAZARDOUS SUBSTANCE which should be handled by trained staff only.

## Applications

- Western Blot (Tissue lysate)

Western blot analysis using KLHL22 monoclonal antibody, clone 7B10 (Cat # MAB10722) against mouse brain tissues lysate.

- Immunofluorescence

Immunofluorescence analysis of U251 cells using KLHL22 monoclonal antibody, clone 7B10 (Cat # MAB10722) (green) . Blue: DRAQ5 fluorescent DNA dye. Red: Actin filaments have been labeled with Alexa Fluor-555 phalloidin.

- Enzyme-linked Immunoabsorbent Assay

## Gene Info — KLHL22

<b>Entrez GeneID</b>	<a href="#">84861</a>
<b>Gene Name</b>	KLHL22
<b>Gene Alias</b>	KELCHL
<b>Gene Description</b>	kelch-like 22 (Drosophila)
<b>Gene Ontology</b>	<a href="#">Hyperlink</a>
<b>Other Designations</b>	kelch-like

## Disease

- [Kidney Failure](#)