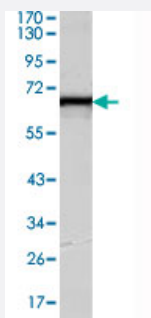


# KLHL12 monoclonal antibody, clone 2G2

Catalog # MAB10719      Size 100 uL

## Applications



### Western Blot (Cell lysate)

Western blot analysis using KLHL12 monoclonal antibody, clone 2G2 (Cat # MAB10719) against HeLa cell lysate.

## Specification

**Product Description** Mouse monoclonal antibody raised against partial recombinant KLHL12.

**Immunogen** Recombinant protein corresponding to human KLHL12.

**Host** Mouse

**Theoretical MW (kDa)** 63

**Reactivity** Human

**Form** Liquid

**Isotype** IgG1

**Recommend Usage**  
ELISA (1:10000)  
Western Blot (1:500-1:2000)  
The optimal working dilution should be determined by the end user.

**Storage Buffer** In ascites (0.03% sodium azide)

**Storage Instruction**  
Store at 4°C. For long term storage store at -20°C.  
Aliquot to avoid repeated freezing and thawing.

**Note**

This product contains sodium azide: a POISONOUS AND HAZARDOUS SUBSTANCE which should be handled by trained staff only.

## Applications

- Western Blot (Cell lysate)

Western blot analysis using KLHL12 monoclonal antibody, clone 2G2 (Cat # MAB10719) against HeLa cell lysate.

- Enzyme-linked Immunoabsorbent Assay

## Gene Info — KLHL12

Entrez GeneID	<a href="#">59349</a>
Gene Name	KLHL12
Gene Alias	C3IP1, DKIR, FLJ27152
Gene Description	kelch-like 12 (Drosophila)
Gene Ontology	<a href="#">Hyperlink</a>
Other Designations	OTTHUMP00000038799 kelch-like 12 kelch-like protein C3IP1

## Disease

- [Genetic Predisposition to Disease](#)
- [Hypertension](#)