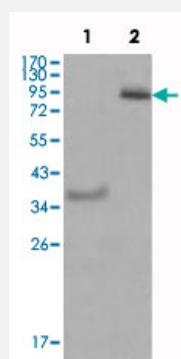


EPHA4 monoclonal antibody, clone 6C1B6

Catalog # MAB10605 Size 100 uL

Applications



Western Blot

Western blot analysis using EPHA4 monoclonal antibody, clone 6C1B6 (Cat # MAB10605) against truncated Trx-EPHA4 recombinant protein (1) and truncated EPHA4 (aa 566-983) -hlgGfc transfected CHO-K1 cell lysate (2) .

Specification

Product Description	Mouse monoclonal antibody raised against partial recombinant EPHA4.
Immunogen	Recombinant protein corresponding to amino acids 751-983 of human EPHA4.
Host	Mouse
Reactivity	Human
Form	Liquid
Isotype	IgG2b
Recommend Usage	ELISA (1:10000) Western Blot (1:500-1:2000) The optimal working dilution should be determined by the end user.
Storage Buffer	In ascites (0.03% sodium azide)
Storage Instruction	Store at 4°C. For long term storage store at -20°C. Aliquot to avoid repeated freezing and thawing.

Note

This product contains sodium azide: a POISONOUS AND HAZARDOUS SUBSTANCE which should be handled by trained staff only.

Applications

- Western Blot

Western blot analysis using EPHA4 monoclonal antibody, clone 6C1B6 (Cat # MAB10605) against truncated Trx-EPHA4 recombinant protein (1) and truncated EPHA4 (aa 566-983) -hlgGfC transfected CHO-K1 cell lysate (2) .

- Enzyme-linked Immunoabsorbent Assay

Gene Info — EPHA4

Entrez GeneID [2043](#)

Gene Name EPHA4

Gene Alias HEK8, SEK, TYRO1

Gene Description EPH receptor A4

Omim ID [602188](#)

Gene Ontology [Hyperlink](#)

Gene Summary This gene belongs to the ephrin receptor subfamily of the protein-tyrosine kinase family. EPH and EPH-related receptors have been implicated in mediating developmental events, particularly in the nervous system. Receptors in the EPH subfamily typically have a single kinase domain and an extracellular region containing a Cys-rich domain and 2 fibronectin type III repeats. The ephrin receptors are divided into 2 groups based on the similarity of their extracellular domain sequences and their affinities for binding ephrin-A and ephrin-B ligands. [provided by RefSeq]

Other Designations OTTHUMP00000164185|TYRO1 protein tyrosine kinase|ephrin receptor EphA4|ephrin type-A receptor 4|receptor protein-tyrosine kinase HEK8|tyrosine-protein kinase receptor SEK

Pathway

- [Axon guidance](#)

Disease

- [Alzheimer Disease](#)
- [Cognition Disorders](#)
- [Genetic Predisposition to Disease](#)
- [Parkinson disease](#)