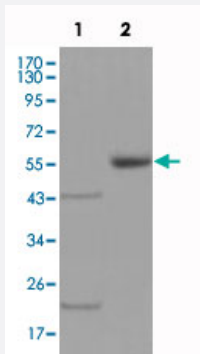


EPHA5 monoclonal antibody, clone 8B10B1

Catalog # MAB10603 Size 100 uL

Applications



Western Blot

Western blot analysis using EPHA5 monoclonal antibody, clone 8B10B1 (Cat # MAB10603) against truncated EPHA5-His recombinant protein (1) and truncated EPHA5 (aa 620-774) -hlgGfc transfected CHO-K1 cell lysate (2) .

Specification

Product Description	Mouse monoclonal antibody raised against partial recombinant EPHA5.
Immunogen	Recombinant protein corresponding to amino acids 620-774 of human EPHA5.
Host	Mouse
Reactivity	Human
Form	Liquid
Isotype	IgG1
Recommend Usage	ELISA (1:10000) Western Blot (1:500-1:2000) The optimal working dilution should be determined by the end user.
Storage Buffer	In ascites (0.03% sodium azide)
Storage Instruction	Store at 4°C. For long term storage store at -20°C. Aliquot to avoid repeated freezing and thawing.

Note

This product contains sodium azide: a POISONOUS AND HAZARDOUS SUBSTANCE which should be handled by trained staff only.

Applications

- Western Blot

Western blot analysis using EPHA5 monoclonal antibody, clone 8B10B1 (Cat # MAB10603) against truncated EPHA5-His recombinant protein (1) and truncated EPHA5 (aa 620-774) -hlgGfc transfected CHO-K1 cell lysate (2) .

- Enzyme-linked Immunoabsorbent Assay

Gene Info — EPHA5

Entrez GeneID	2044
---------------	----------------------

Gene Name	EPHA5
-----------	-------

Gene Alias	CEK7, EHK1, HEK7, TYRO4
------------	-------------------------

Gene Description	EPH receptor A5
------------------	-----------------

Omim ID	600004
---------	------------------------

Gene Ontology	Hyperlink
---------------	---------------------------

Gene Summary	<p>This gene belongs to the ephrin receptor subfamily of the protein-tyrosine kinase family. EPH and EPH-related receptors have been implicated in mediating developmental events, particularly in the nervous system. Receptors in the EPH subfamily typically have a single kinase domain and an extracellular region containing a Cys-rich domain and 2 fibronectin type III repeats. The ephrin receptors are divided into 2 groups based on the similarity of their extracellular domain sequences and their affinities for binding ephrin-A and ephrin-B ligands. Two transcript variants encoding different isoforms have been found for this gene.</p>
--------------	--

Other Designations	Eph homology kinase-1 ephrin receptor EphA5 ephrin type-A receptor 5 receptor protein-tyrosine kinase HEK7 tyrosine-protein kinase receptor EHK-1
--------------------	---

Pathway

- [Axon guidance](#)

Disease

- [Tobacco Use Disorder](#)