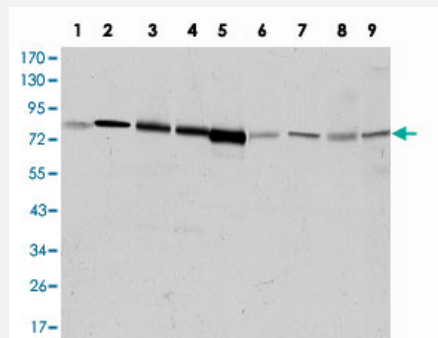


ADRBK1 monoclonal antibody, clone 3F8

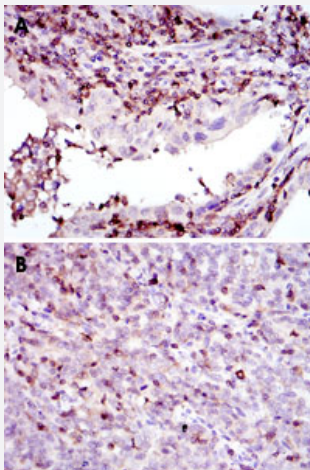
Catalog # MAB10569 Size 100 uL

Applications



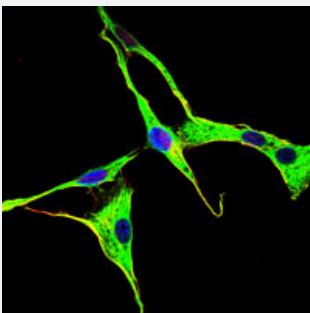
Western Blot (Cell lysate)

Western blot analysis using ADRBK1 monoclonal antibody, clone 3F8 (Cat # MAB10569) against HeLa (1), Jurkat (2), MOLT 4 (3), Raji (4), THP-1 (5), L1210 (6), COS-7 (7), PC-12 (8), and NIH/3T3 (9) cell lysate.



Immunohistochemistry (Formalin/PFA-fixed paraffin-embedded sections)

Immunohistochemical analysis of paraffin-embedded human endometrial cancer tissues (A) and cervical cancer tissues (B) using ADRBK1 monoclonal antibody, clone 3F8 (Cat # MAB10569) with DAB staining.

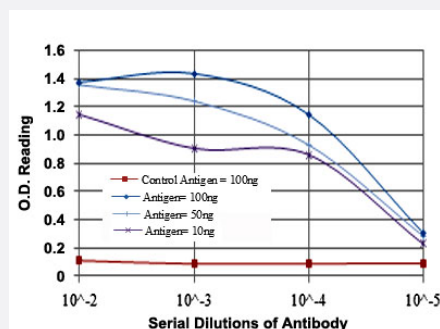


Immunofluorescence

Immunofluorescence analysis of NIH/3T3 cells using ADRBK1 monoclonal antibody, clone 3F8 (Cat # MAB10569) (green). Blue: DRAQ5 fluorescent DNA dye.

Enzyme-linked Immunoabsorbent Assay

ELISA detection with ADRBK1 monoclonal antibody, clone 3F8 (Cat # MAB10569).



Specification

Product Description Mouse monoclonal antibody raised against partial recombinant ADRBK1.

Immunogen Recombinant protein corresponding to human ADRBK1.

Host Mouse

Reactivity Human, Monkey, Mouse, Rat

Form Liquid

Isotype IgG1

Recommend Usage
 ELISA (1:10000)
 Western Blot (1:500-1:2000)
 Immunohistochemistry (1:200-1:1000)
 Immunofluorescence (1:200-1:1000)
 The optimal working dilution should be determined by the end user.

Storage Buffer In ascites (0.03% sodium azide)

Storage Instruction
 Store at 4°C. For long term storage store at -20°C.
 Aliquot to avoid repeated freezing and thawing.

Note This product contains sodium azide: a POISONOUS AND HAZARDOUS SUBSTANCE which should be handled by trained staff only.

Applications

● Western Blot (Cell lysate)

Western blot analysis using ADRBK1 monoclonal antibody, clone 3F8 (Cat # MAB10569) against HeLa (1), Jurkat (2), MOLT 4 (3), Raji (4), THP-1 (5), L1210 (6), COS-7 (7), PC-12 (8), and NIH/3T3 (9) cell lysate.

- Immunohistochemistry (Formalin/PFA-fixed paraffin-embedded sections)

Immunohistochemical analysis of paraffin-embedded human endometrial cancer tissues (A) and cervical cancer tissues (B) using ADRBK1 monoclonal antibody, clone 3F8 (Cat # MAB10569) with DAB staining.

- Immunofluorescence

Immunofluorescence analysis of NIH/3T3 cells using ADRBK1 monoclonal antibody, clone 3F8 (Cat # MAB10569) (green). Blue: DRAQ5 fluorescent DNA dye.

- Enzyme-linked Immunoabsorbent Assay

ELISA detection with ADRBK1 monoclonal antibody, clone 3F8 (Cat # MAB10569).

Gene Info — ADRBK1

Entrez GeneID [156](#)

Gene Name ADRBK1

Gene Alias BARK1, BETA-ARK1, FLJ16718, GRK2

Gene Description adrenergic, beta, receptor kinase 1

Omim ID [109635](#)

Gene Ontology [Hyperlink](#)

Gene Summary The product of this gene phosphorylates the beta-2-adrenergic receptor and appears to mediate agonist-specific desensitization observed at high agonist concentrations. This protein is an ubiquitous cytosolic enzyme that specifically phosphorylates the activated form of the beta-adrenergic and related G-protein-coupled receptors. Abnormal coupling of beta-adrenergic receptor to G protein is involved in the pathogenesis of the failing heart. [provided by RefSeq]

Other Designations beta adrenergic receptor kinase 1

Pathway

- [Chemokine signaling pathway](#)
- [Endocytosis](#)

Disease

- [Anorexia Nervosa](#)

- [Bulimia](#)
- [Cardiovascular Diseases](#)
- [Diabetes Mellitus](#)
- [Edema](#)
- [Genetic Predisposition to Disease](#)