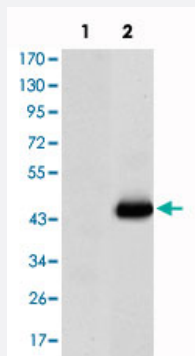


CEACAM5 monoclonal antibody, clone 3G12

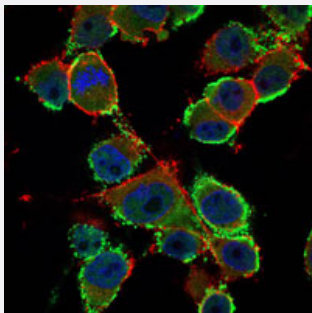
Catalog # MAB10551 Size 100 uL

Applications



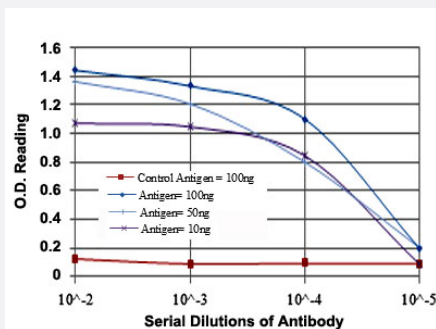
Western Blot (Transfected lysate)

Western blot analysis using CEACAM5 monoclonal antibody, clone 3G12 (Cat # MAB10551) against HEK293 (1) and CEA-hlgGfc transfected HEK293 (2) cell lysate.



Immunofluorescence

Immunofluorescence analysis of PANC-1 cells using CEACAM5 monoclonal antibody, clone 3G12 (Cat # MAB10551) (green). Blue: DRAQ5 fluorescent DNA dye. Red: Actin filaments have been labeled with Alexa Fluor-555 phalloidin.



Enzyme-linked Immunoabsorbent Assay

ELISA detection with CEACAM5 monoclonal antibody, clone 3G12 (Cat # MAB10551).

Specification

Product Description

Mouse monoclonal antibody raised against partial recombinant CEACAM5.

Immunogen	Recombinant protein corresponding to human CEACAM5.
Host	Mouse
Theoretical MW (kDa)	77
Reactivity	Human
Form	Liquid
Isotype	IgG1
Recommend Usage	ELISA (1:10000) Western Blot (1:500-1:2000) Immunofluorescence (1:200-1:1000) The optimal working dilution should be determined by the end user.
Storage Buffer	In ascites (0.03% sodium azide)
Storage Instruction	Store at 4°C. For long term storage store at -20°C. Aliquot to avoid repeated freezing and thawing.
Note	This product contains sodium azide: a POISONOUS AND HAZARDOUS SUBSTANCE which should be handled by trained staff only.

Applications

- Western Blot (Transfected lysate)

Western blot analysis using CEACAM5 monoclonal antibody, clone 3G12 (Cat # MAB10551) against HEK293 (1) and CEA-hlgGfc transfected HEK293 (2) cell lysate.

- Immunofluorescence

Immunofluorescence analysis of PANC-1 cells using CEACAM5 monoclonal antibody, clone 3G12 (Cat # MAB10551) (green). Blue: DRAQ5 fluorescent DNA dye. Red: Actin filaments have been labeled with Alexa Fluor-555 phalloidin.

- Enzyme-linked Immunoabsorbent Assay

ELISA detection with CEACAM5 monoclonal antibody, clone 3G12 (Cat # MAB10551).

Gene Info — CEACAM5

Entrez GeneID	1048
Gene Name	CEACAM5
Gene Alias	CD66e, CEA, DKFZp781M2392

Gene Description	carcinoembryonic antigen-related cell adhesion molecule 5
Omim ID	114890
Gene Ontology	Hyperlink
Other Designations	-