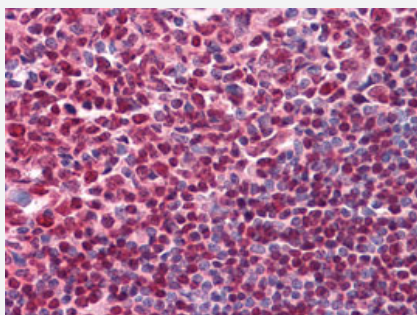


# MS4A1 monoclonal antibody, clone 3E9D3C1G3

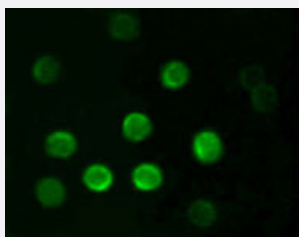
Catalog # MAB10530      Size 100 uL

## Applications



### Immunohistochemistry (Formalin/PFA-fixed paraffin-embedded sections)

Immunohistochemical analysis of paraffin-embedded human tonsil tissues using MS4A1 monoclonal antibody, clone 3E9D3C1G3 (Cat # MAB10530).



### Immunofluorescence

Immunofluorescence analysis of B lymphocytes using MS4A1 monoclonal antibody, clone 3E9D3C1G3 (Cat # MAB10530).

## Specification

Product Description	Mouse monoclonal antibody raised against synthetic peptide of MS4A1.
Immunogen	A synthetic peptide (conjugated with KLH) corresponding to human MS4A1.
Sequence	EPANPSEKNSPSTQY
Host	Mouse
Reactivity	Human
Form	Liquid
Isotype	IgG

<b>Recommend Usage</b>	ELISA (1:10000) Immunohistochemistry (1:200-1:1000) Immunofluorescence (1:200-1:1000) The optimal working dilution should be determined by the end user.
<b>Storage Buffer</b>	In ascites (0.03% sodium azide)
<b>Storage Instruction</b>	Store at 4°C. For long term storage store at -20°C. Aliquot to avoid repeated freezing and thawing.
<b>Note</b>	This product contains sodium azide: a POISONOUS AND HAZARDOUS SUBSTANCE which should be handled by trained staff only.

## Applications

- Immunohistochemistry (Formalin/PFA-fixed paraffin-embedded sections)

Immunohistochemical analysis of paraffin-embedded human tonsil tissues using MS4A1 monoclonal antibody, clone 3E9D3C1G3 (Cat # MAB10530).

- Immunofluorescence

Immunofluorescence analysis of B lymphocytes using MS4A1 monoclonal antibody, clone 3E9D3C1G3 (Cat # MAB10530).

- Enzyme-linked Immunoabsorbent Assay

## Gene Info — MS4A1

<b>Entrez GeneID</b>	<a href="#">931</a>
<b>Gene Name</b>	MS4A1
<b>Gene Alias</b>	B1, Bp35, CD20, LEU-16, MGC3969, MS4A2, S7
<b>Gene Description</b>	membrane-spanning 4-domains, subfamily A, member 1
<b>Omim ID</b>	<a href="#">112210</a>
<b>Gene Ontology</b>	<a href="#">Hyperlink</a>
<b>Gene Summary</b>	This gene encodes a member of the membrane-spanning 4A gene family. Members of this nascent protein family are characterized by common structural features and similar intron/exon splice boundaries and display unique expression patterns among hematopoietic cells and nonlymphoid tissues. This gene encodes a B-lymphocyte surface molecule which plays a role in the development and differentiation of B-cells into plasma cells. This family member is localized to 11q12, among a cluster of family members. Alternative splicing of this gene results in two transcript variants which encode the same protein. [provided by RefSeq]

**Other Designations**

B-lymphocyte cell-surface antigen B1|CD20 antigen|CD20 receptor

**Pathway**

- [Hematopoietic cell lineage](#)

**Disease**

- [Breast cancer](#)
- [Breast Neoplasms](#)
- [Genetic Predisposition to Disease](#)
- [Lymphoma](#)
- [Neoplasm Recurrence](#)
- [Ovarian cancer](#)