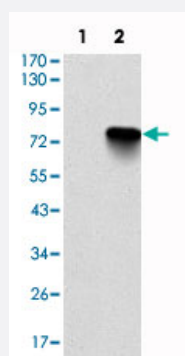


BMI1 monoclonal antibody, clone 3E3

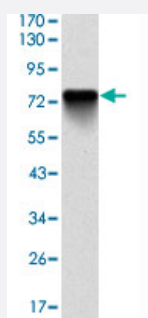
Catalog # MAB10506 Size 100 uL

Applications



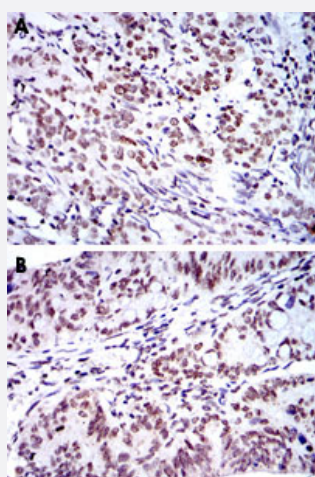
Western Blot (Transfected lysate)

Western blot analysis using BMI1 monoclonal antibody, clone 3E3 (Cat # MAB10506) against HEK293 (1) and BMI1-hlgGfc transfected HEK293 (2) cell lysate.



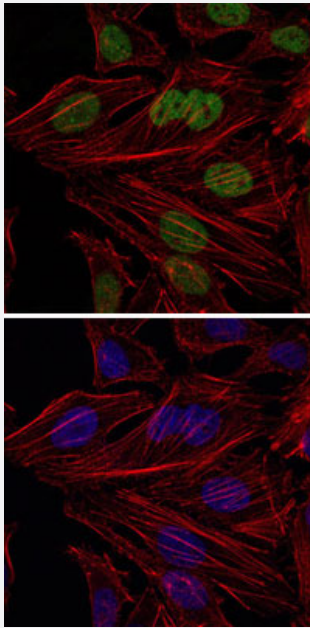
Western Blot (Recombinant protein)

Western blot analysis using BMI1 monoclonal antibody, clone 3E3 (Cat # MAB10506) against human BMI1 (aa : 1-326) recombinant protein. (Expected MW is 62.4 kDa)



Immunohistochemistry (Formalin/PFA-fixed paraffin-embedded sections)

Immunohistochemical analysis of paraffin-embedded human cervical cancer (A) and human rectum cancer (B) tissues using BMI1 monoclonal antibody, clone 3E3 (Cat # MAB10506) with DAB staining.

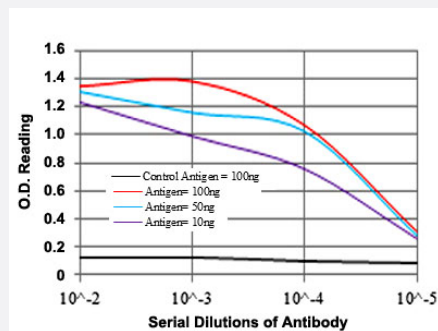


Immunofluorescence

Immunofluorescence analysis of HeLa cells using BMI1 monoclonal antibody, clone 3E3 (Cat # MAB10506) (green). Blue: DRAQ5 fluorescent DNA dye. Red: Actin filaments have been labeled with Alexa Fluor-555 phalloidin.

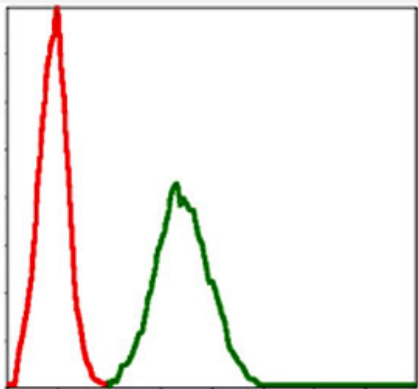
Enzyme-linked Immunoabsorbent Assay

ELISA detection with BMI1 monoclonal antibody, clone 3E3 (Cat # MAB10506).



Flow Cytometry

Flow cytometric analysis of NIH/3T3 cells using BMI1 monoclonal antibody, clone 3E3 (Cat # MAB10506) (green) and negative control (red).



Specification

Product Description	Mouse monoclonal antibody raised against partial recombinant BMI1.
Immunogen	Recombinant protein corresponding to human BMI1.
Host	Mouse

Theoretical MW (kDa)	37
Form	Liquid
Isotype	IgG1
Recommend Usage	ELISA (1:10000) Western Blot (1:500-1:2000) Immunohistochemistry (1:200-1:1000) Immunofluorescence (1:200-1:1000) Flow cytometry (1:200-1:400) The optimal working dilution should be determined by the end user.
Storage Buffer	In ascites (0.03% sodium azide)
Storage Instruction	Store at 4°C. For long term storage store at -20°C. Aliquot to avoid repeated freezing and thawing.
Note	This product contains sodium azide: a POISONOUS AND HAZARDOUS SUBSTANCE which should be handled by trained staff only.

Applications

- Western Blot (Transfected lysate)

Western blot analysis using BMI1 monoclonal antibody, clone 3E3 (Cat # MAB10506) against HEK293 (1) and BMI1-hlgGFc transfected HEK293 (2) cell lysate.

- Western Blot (Recombinant protein)

Western blot analysis using BMI1 monoclonal antibody, clone 3E3 (Cat # MAB10506) against human BMI1 (aa : 1-326) recombinant protein. (Expected MW is 62.4 kDa)

- Immunohistochemistry (Formalin/PFA-fixed paraffin-embedded sections)

Immunohistochemical analysis of paraffin-embedded human cervical cancer (A) and human rectum cancer (B) tissues using BMI1 monoclonal antibody, clone 3E3 (Cat # MAB10506) with DAB staining.

- Immunofluorescence

Immunofluorescence analysis of HeLa cells using BMI1 monoclonal antibody, clone 3E3 (Cat # MAB10506) (green). Blue: DRAQ5 fluorescent DNA dye. Red: Actin filaments have been labeled with Alexa Fluor-555 phalloidin.

- Enzyme-linked Immunoabsorbent Assay

ELISA detection with BMI1 monoclonal antibody, clone 3E3 (Cat # MAB10506).

- Flow Cytometry

Flow cytometric analysis of NIH/3T3 cells using BMI1 monoclonal antibody, clone 3E3 (Cat # MAB10506) (green) and negative control (red).

Gene Info — BMI1

Entrez GeneID	648
Gene Name	BMI1
Gene Alias	MGC12685, PCGF4, RNF51
Gene Description	BMI1 polycomb ring finger oncogene
Omim ID	164831
Gene Ontology	Hyperlink
Other Designations	B lymphoma Mo-MLV insertion region 1 homolog flvi-2/bmi-1 murine leukemia viral (bmi-1) oncogene homolog oncogene BMI-1 polycomb group ring finger 4