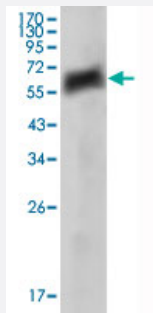


AXL monoclonal antibody, clone 7E10

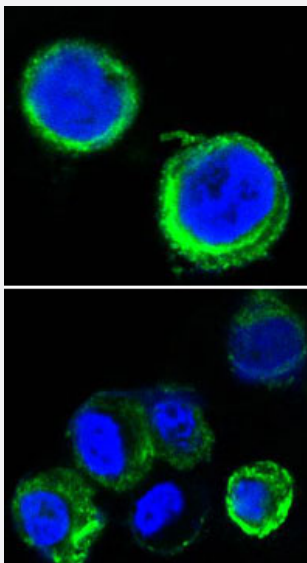
Catalog # MAB10498 Size 100 uL

Applications



Western Blot (Recombinant protein)

Western blot analysis using AXL monoclonal antibody, clone 7E10 (Cat # MAB10498) against extracellular domain of human AXL (aa 19-444).



Immunofluorescence

Confocal immunofluorescence analysis of methanol-fixed HEK293 cells trasfected with AXL-hlgGFc using AXL monoclonal antibody, clone 7E10 (Cat # MAB10498)(green), showing cytoplasmic and membrane localization. Blue: DRAQ5 fluorescent DNA dye.

Specification

| | |
|-----------------------------|---|
| Product Description | Mouse monoclonal antibody raised against partial recombinant AXL. |
| Immunogen | Recombinant hlgGFc tag fusion protein corresponding to extracellular fragment of human AXL. |
| Host | Mouse |
| Theoretical MW (kDa) | 97.4 |

| | |
|---------------------|---|
| Reactivity | Human |
| Form | Liquid |
| Isotype | IgG1 |
| Recommend Usage | ELISA (1:10000) Western Blot (1:500-1:2000) Immunofluorescence (1:200-1:1000) The optimal working dilution should be determined by the end user. |
| Storage Buffer | In ascites (0.03% sodium azide) |
| Storage Instruction | Store at 4°C. For long term storage store at -20°C. Aliquot to avoid repeated freezing and thawing. |
| Note | This product contains sodium azide: a POISONOUS AND HAZARDOUS SUBSTANCE which should be handled by trained staff only. |

Applications

- Western Blot (Recombinant protein)

Western blot analysis using AXL monoclonal antibody, clone 7E10 (Cat # MAB10498) against extracellular domain of human AXL (aa 19-444).

- Immunofluorescence

Confocal immunofluorescence analysis of methanol-fixed HEK293 cells transfected with AXL-hlgGfc using AXL monoclonal antibody, clone 7E10 (Cat # MAB10498)(green), showing cytoplasmic and membrane localization. Blue: DRAQ5 fluorescent DNA dye.

- Enzyme-linked Immunoabsorbent Assay

Gene Info — AXL

| | |
|------------------|------------------------------|
| Entrez GeneID | 558 |
| Gene Name | AXL |
| Gene Alias | JTK11, UFO |
| Gene Description | AXL receptor tyrosine kinase |
| Omim ID | 109135 |
| Gene Ontology | Hyperlink |

Gene Summary

The protein encoded by this gene is a member of the receptor tyrosine kinase subfamily. Although it is similar to other receptor tyrosine kinases, this protein represents a unique structure of the extracellular region that juxtaposes IgL and FNIII repeats. It transduces signals from the extracellular matrix into the cytoplasm by binding growth factors like vitamin K-dependent protein growth-arrest-specific gene 6. It is involved in the stimulation of cell proliferation and can also mediate cell aggregation by homophilic binding. Alternatively spliced transcript variants encoding different isoforms have been identified. [provided by RefSeq]

Other Designations

AXL transforming sequence/gene|oncogene AXL

Disease

- [Cardiovascular Diseases](#)
- [Carotid Artery Diseases](#)
- [Diabetes Mellitus](#)
- [Edema](#)
- [Genetic Predisposition to Disease](#)
- [Stroke](#)