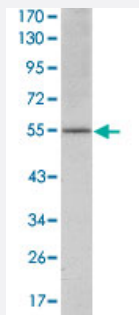


# ATF2 monoclonal antibody, clone 4F12

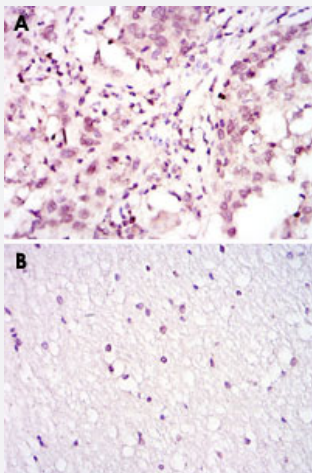
Catalog # MAB10494      Size 100 uL

## Applications



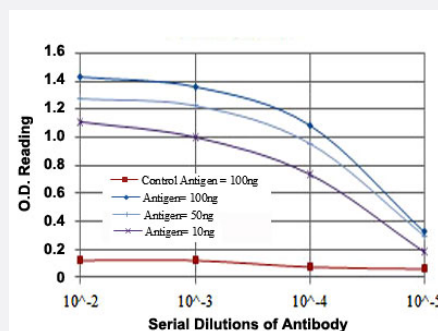
### Western Blot (Cell lysate)

Western blot analysis using ATF2 monoclonal antibody, clone 4F12 (Cat # MAB10494) against NIH/3T3 cell lysate.



### Immunohistochemistry (Formalin/PFA-fixed paraffin-embedded sections)

Immunohistochemical analysis of paraffin-embedded human lung cancer (A) and brain tissues (B) using ATF2 monoclonal antibody, clone 4F12 (Cat # MAB10494) with DAB staining.



### Enzyme-linked Immunoabsorbent Assay

ELISA detection with ATF2 monoclonal antibody, clone 4F12 (Cat # MAB10494).

## Specification

<b>Product Description</b>	Mouse monoclonal antibody raised against partial recombinant ATF2.
<b>Immunogen</b>	Recombinant protein corresponding to human ATF2.
<b>Host</b>	Mouse
<b>Theoretical MW (kDa)</b>	55
<b>Reactivity</b>	Human, Mouse
<b>Form</b>	Liquid
<b>Isotype</b>	IgG1
<b>Recommend Usage</b>	ELISA (1:10000) Western Blot (1:500-1:2000) Immunohistochemistry (1:200-1:1000) The optimal working dilution should be determined by the end user.
<b>Storage Buffer</b>	In ascites (0.03% sodium azide)
<b>Storage Instruction</b>	Store at 4°C. For long term storage store at -20°C. Aliquot to avoid repeated freezing and thawing.
<b>Note</b>	This product contains sodium azide: a POISONOUS AND HAZARDOUS SUBSTANCE which should be handled by trained staff only.

## Applications

- Western Blot (Cell lysate)

Western blot analysis using ATF2 monoclonal antibody, clone 4F12 (Cat # MAB10494) against NIH/3T3 cell lysate.

- Immunohistochemistry (Formalin/PFA-fixed paraffin-embedded sections)

Immunohistochemical analysis of paraffin-embedded human lung cancer (A) and brain tissues (B) using ATF2 monoclonal antibody, clone 4F12 (Cat # MAB10494) with DAB staining.

- Enzyme-linked Immunoabsorbent Assay

ELISA detection with ATF2 monoclonal antibody, clone 4F12 (Cat # MAB10494).

## Gene Info — ATF2

Entrez GeneID

[1386](#)

Gene Name	ATF2
Gene Alias	CRE-BP1, CREB2, HB16, MGC111558, TREB7
Gene Description	activating transcription factor 2
Omim ID	<a href="#">123811</a>
Gene Ontology	<a href="#">Hyperlink</a>
Gene Summary	<p>This gene encodes a transcription factor that is a member of the leucine zipper family of DNA binding proteins. This protein binds to the cAMP-responsive element (CRE), an octameric palindromic sequence. The protein forms a homodimer or heterodimer with c-Jun and stimulates CRE-dependent transcription. The protein is also a histone acetyltransferase (HAT) that specifically acetylates histones H2B and H4 in vitro; thus it may represent a class of sequence-specific factors that activate transcription by direct effects on chromatin components. Additional transcript variants have been identified but their biological validity has not been determined. [provided by RefSeq]</p>
Other Designations	OTTHUMP00000163262 activating transcription factor 2 splice variant ATF2-var2 cAMP responsive element binding protein 2, formerly

## Pathway

- [MAPK signaling pathway](#)

## Disease

- [Bipolar Disorder](#)
- [Cardiovascular Diseases](#)
- [Diabetes Mellitus](#)
- [Edema](#)
- [Genetic Predisposition to Disease](#)
- [Schizophrenia](#)
- [Tobacco Use Disorder](#)