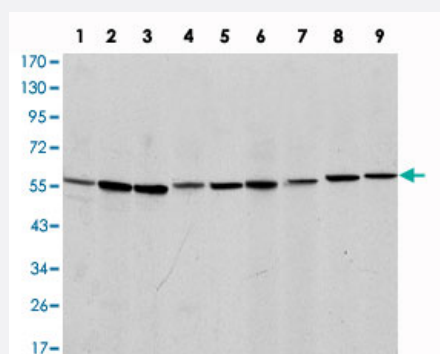


AIFM1 monoclonal antibody, clone 4E7

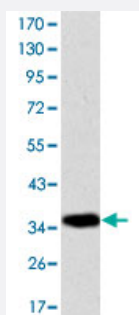
Catalog # MAB10484 Size 100 uL

Applications



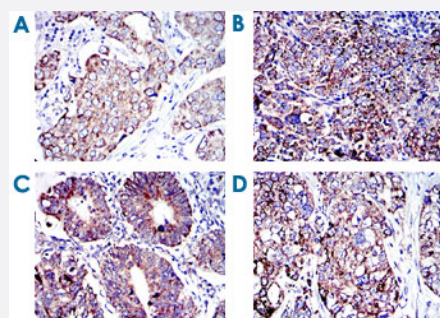
Western Blot (Cell lysate)

Western blot analysis using AIFM1 monoclonal antibody, clone 4E7 (Cat # MAB10484) against NIH/3T3 (1), Jurkat (2), HeLa (3), HepG2 (4), MOLT 4 (5), C6 (6), Raji (7), COS-7 (8) and PC-12 (9) cell lysate.



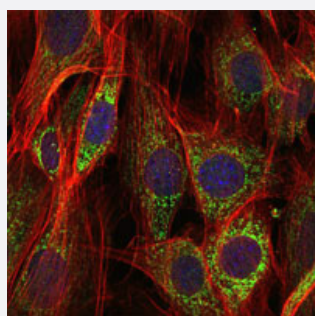
Western Blot (Recombinant protein)

Western blot analysis using AIFM1 monoclonal antibody, clone 4E7 (Cat # MAB10484) against recombinant protein.



Immunohistochemistry (Formalin/PFA-fixed paraffin-embedded sections)

Immunohistochemical analysis of paraffin-embedded human breast cancer (A), human cervical cancer (B), human rectum cancer (C) and human lung cancer (D) tissues using AIFM1 monoclonal antibody, clone 4E7 (Cat # MAB10484) with DAB staining.

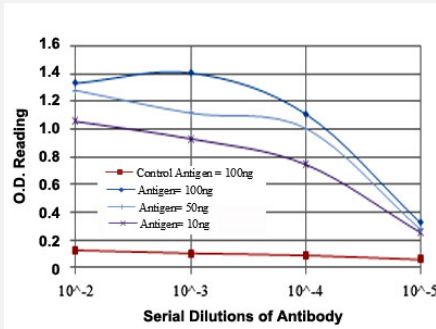


Immunofluorescence

Immunofluorescence analysis of NIH/3T3 cells using AIFM1 monoclonal antibody, clone 4E7 (Cat # MAB10484) (green). Blue: DRAQ5 fluorescent DNA dye. Red: Actin filaments have been labeled with Alexa Fluor-555 phalloidin.

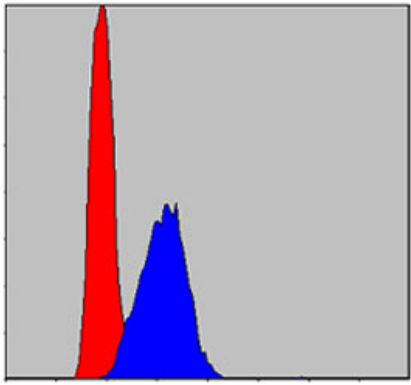
Enzyme-linked Immunoabsorbent Assay

ELISA detection with AIFM1 monoclonal antibody, clone 4E7 (Cat # MAB10484).



Flow Cytometry

Flow cytometric analysis of HepG2 cells using AIFM1 monoclonal antibody, clone 4E7 (Cat # MAB10484) (blue) and negative control (red).



Specification

Product Description Mouse monoclonal antibody raised against partial recombinant AIFM1.

Immunogen Recombinant protein corresponding to human AIFM1.

Host Mouse

Theoretical MW (kDa) 67

Reactivity Human, Monkey, Mouse, Rat

Form Liquid

Isotype IgG2b

Recommend Usage

- ELISA (1:10000)
- Western Blot (1:500-1:2000)
- Immunohistochemistry (1:200-1:1000)
- Immunofluorescence (1:200-1:1000)
- Flow cytometry (1:200-1:400)
- The optimal working dilution should be determined by the end user.

Storage Buffer In ascites (0.03% sodium azide)

Storage Instruction

Store at 4°C. For long term storage store at -20°C.
Aliquot to avoid repeated freezing and thawing.

Note

This product contains sodium azide: a POISONOUS AND HAZARDOUS SUBSTANCE which should be handled by trained staff only.

Applications

- Western Blot (Cell lysate)

Western blot analysis using AIFM1 monoclonal antibody, clone 4E7 (Cat # MAB10484) against NIH/3T3 (1), Jurkat (2), HeLa (3), HepG2 (4), MOLT 4 (5), C6 (6), Raji (7), COS-7 (8) and PC-12 (9) cell lysate.

- Western Blot (Recombinant protein)

Western blot analysis using AIFM1 monoclonal antibody, clone 4E7 (Cat # MAB10484) against recombinant protein.

- Immunohistochemistry (Formalin/PFA-fixed paraffin-embedded sections)

Immunohistochemical analysis of paraffin-embedded human breast cancer (A), human cervical cancer (B), human rectum cancer (C) and human lung cancer (D) tissues using AIFM1 monoclonal antibody, clone 4E7 (Cat # MAB10484) with DAB staining.

- Immunofluorescence

Immunofluorescence analysis of NIH/3T3 cells using AIFM1 monoclonal antibody, clone 4E7 (Cat # MAB10484) (green). Blue: DRAQ5 fluorescent DNA dye. Red: Actin filaments have been labeled with Alexa Fluor-555 phalloidin.

- Enzyme-linked Immunoabsorbent Assay

ELISA detection with AIFM1 monoclonal antibody, clone 4E7 (Cat # MAB10484).

- Flow Cytometry

Flow cytometric analysis of HepG2 cells using AIFM1 monoclonal antibody, clone 4E7 (Cat # MAB10484) (blue) and negative control (red).

Gene Info — AIFM1

Entrez GeneID[9131](#)**Gene Name**

AIFM1

Gene Alias

AIF, MGC111425, PDCD8

Gene Description

apoptosis-inducing factor, mitochondrion-associated, 1

Omim ID[300169](#)

Gene Ontology

[Hyperlink](#)

Gene Summary

This gene encodes a flavoprotein essential for nuclear disassembly in apoptotic cells that is found in the mitochondrial intermembrane space in healthy cells. Induction of apoptosis results in the translocation of this protein to the nucleus where it effects chromosome condensation and fragmentation. In addition, this gene product induces mitochondria to release the apoptogenic proteins cytochrome c and caspase-9. Several alternative transcripts encoding different isoforms have been identified for this gene. [provided by RefSeq]

Other Designations

OTTHUMP00000024007|OTTHUMP00000024008|OTTHUMP00000024009|programmed cell death 8|programmed cell death 8 (apoptosis-inducing factor)|striatal apoptosis-inducing factor

Pathway

- [Apoptosis](#)

Disease

- [Cardiovascular Diseases](#)
- [Diabetes Mellitus](#)
- [Edema](#)
- [Genetic Predisposition to Disease](#)
- [Prostatic Neoplasms](#)