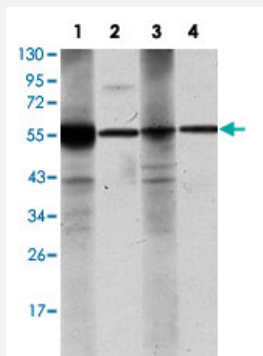


ALDH1A1 monoclonal antibody, clone 5A11

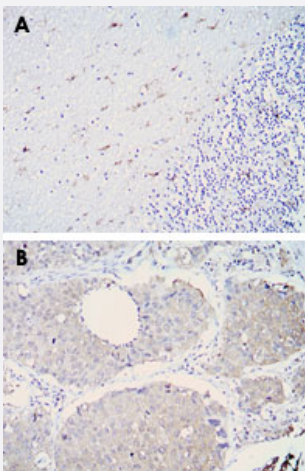
Catalog # MAB10443 Size 100 uL

Applications



Western Blot (Cell lysate)

Western blot analysis of ALDH1A1 monoclonal antibody, clone 5A11 (Cat # MAB10443) against Raji (1), Jurkat (2), THP-1 (3) and K-562 (4) cell lysate.



Immunohistochemistry (Formalin/PFA-fixed paraffin-embedded sections)

Immunohistochemical analysis of paraffin-embedded human cerebellum tissue (A) and lung cancer (B) using ALDH1A1 monoclonal antibody, clone 5A11 (Cat # MAB10443) with DAB staining.

Specification

Product Description	Mouse monoclonal antibody raised against recombinant ALDH1A1.
Immunogen	Recombinant protein corresponding to human ALDH1A1.
Host	Mouse
Theoretical MW (kDa)	55
Reactivity	Human

Form	Liquid
Isotype	IgG1
Recommend Usage	Western Blot (1:500-1:2000) Immunohistochemistry (1:200-1:1000) ELISA (1:10000) The optimal working dilution should be determined by the end user.
Storage Buffer	In ascitic (0.03% sodium azide)
Storage Instruction	Store at 4°C. For long term storage store at -20°C. Aliquot to avoid repeated freezing and thawing.
Note	This product contains sodium azide: a POISONOUS AND HAZARDOUS SUBSTANCE which should be handled by trained staff only.

Applications

- Western Blot (Cell lysate)

Western blot analysis of ALDH1A1 monoclonal antibody, clone 5A11 (Cat # MAB10443) against Raji (1), Jurkat (2), THP-1 (3) and K-562 (4) cell lysate.

- Immunohistochemistry (Formalin/PFA-fixed paraffin-embedded sections)

Immunohistochemical analysis of paraffin-embedded human cerebellum tissue (A) and lung cancer (B) using ALDH1A1 monoclonal antibody, clone 5A11 (Cat # MAB10443) with DAB staining.

- Enzyme-linked Immunoabsorbent Assay

Gene Info — ALDH1A1

Entrez GeneID	216
Gene Name	ALDH1A1
Gene Alias	ALDC, ALDH-E1, ALDH1, ALDH11, MGC2318, PUMB1, RALDH1
Gene Description	aldehyde dehydrogenase 1 family, member A1
Gene Ontology	Hyperlink

Gene Summary

This protein belongs to the aldehyde dehydrogenases family of proteins. Aldehyde dehydrogenase is the second enzyme of the major oxidative pathway of alcohol metabolism. Two major liver isoforms of this enzyme, cytosolic and mitochondrial, can be distinguished by their electrophoretic mobilities, kinetic properties, and subcellular localizations. Most Caucasians have two major isozymes, while approximately 50% of Orientals have only the cytosolic isozyme, missing the mitochondrial isozyme. A remarkably higher frequency of acute alcohol intoxication among Orientals than among Caucasians could be related to the absence of the mitochondrial isozyme. This gene encodes a cytosolic isoform, which has a high affinity for aldehydes. [provided by RefSeq]

Other Designations

ALDH class 1|acetaldehyde dehydrogenase 1|aldehyde dehydrogenase 1, soluble|aldehyde dehydrogenase 1A1|aldehyde dehydrogenase, liver cytosolic|retinal dehydrogenase 1|retinaldehyde dehydrogenase 1

Pathway

- [Metabolic pathways](#)
- [Retinol metabolism](#)

Disease

- [Alcoholism](#)
- [Breast cancer](#)
- [Breast Neoplasms](#)
- [Carcinoma](#)
- [Chromosome Deletion](#)
- [Cleft Lip](#)
- [Cleft Palate](#)
- [Disease Models](#)
- [Drug Toxicity](#)
- [Genetic Predisposition to Disease](#)
- [Kidney Failure](#)
- [Lymphoma](#)
- [Neoplasms](#)

- [Ovarian cancer](#)
- [Ovarian Neoplasms](#)
- [Schizophrenia](#)
- [Tobacco Use Disorder](#)