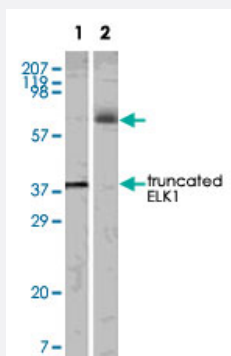


# ELK1 monoclonal antibody, clone 7E10D5

Catalog # MAB10438      Size 100 uL

## Applications



### Western Blot

Western blot analysis using ELK1 monoclonal antibody, clone 7E10D5 (Cat # MAB10438) against truncated ELK1 recombinant protein (1) and K-562 cell lysate (2).

## Specification

<b>Product Description</b>	Mouse monoclonal antibody raised against recombinant ELK1.
<b>Immunogen</b>	Recombinant protein corresponding to human ELK1.
<b>Host</b>	Mouse
<b>Reactivity</b>	Human
<b>Form</b>	Liquid
<b>Isotype</b>	IgG1
<b>Recommend Usage</b>	Western Blot (1:500-1:2000) ELISA (1:10000) The optimal working dilution should be determined by the end user.
<b>Storage Buffer</b>	In ascitic (0.03% sodium azide)
<b>Storage Instruction</b>	Store at 4°C. For long term storage store at -20°C. Aliquot to avoid repeated freezing and thawing.

**Note**

This product contains sodium azide: a POISONOUS AND HAZARDOUS SUBSTANCE which should be handled by trained staff only.

## Applications

- Western Blot

Western blot analysis using ELK1 monoclonal antibody, clone 7E10D5 (Cat # MAB10438) against truncated ELK1 recombinant protein (1) and K-562 cell lysate (2).

- Enzyme-linked Immunoabsorbent Assay

## Gene Info — ELK1

Entrez GeneID	<a href="#">2002</a>
---------------	----------------------

Gene Name	ELK1
-----------	------

Gene Alias	-
------------	---

Gene Description	ELK1, member of ETS oncogene family
------------------	-------------------------------------

Omim ID	<a href="#">311040</a>
---------	------------------------

Gene Ontology	<a href="#">Hyperlink</a>
---------------	---------------------------

Gene Summary	This gene is a member of the Ets family of transcription factors and of the ternary complex factor (TCF) subfamily. Proteins of the TCF subfamily form a ternary complex by binding to the the serum response factor and the serum response element in the promoter of the c-fos proto-oncogene. The protein encoded by this gene is a nuclear target for the ras-raf-MAPK signaling cascade. Alternatively spliced transcript variants encoding the same protein have been found for this gene. [provided by RefSeq]
--------------	---

Other Designations	ELK1 protein OTTHUMP00000023224 OTTHUMP00000023225
--------------------	--

## Pathway

- [Endometrial cancer](#)
- [ErbB signaling pathway](#)
- [Focal adhesion](#)
- [GnRH signaling pathway](#)

- [Insulin signaling pathway](#)
- [MAPK signaling pathway](#)
- [Prion diseases](#)

## Disease

- [Cardiovascular Diseases](#)
- [Diabetes Mellitus](#)
- [Edema](#)