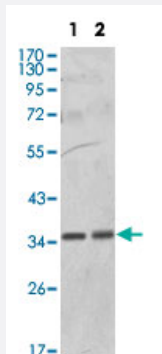


PPP1CA monoclonal antibody, clone 6D1

Catalog # MAB10381 Size 100 uL

Applications



Western Blot (Cell lysate)

Western blot analysis using PPP1CA monoclonal antibody, clone 6D1 (Cat # MAB10381) against HeLa (1) and NIH/3T3 (2) cell lysate.

Specification

Product Description Mouse monoclonal antibody raised against recombinant PPP1CA.

Immunogen Recombinant protein corresponding to human PPP1CA.

Host Mouse

Theoretical MW (kDa) 38

Reactivity Human, Mouse

Form Liquid

Isotype IgG1

Recommend Usage ELISA (1:10000)
Western Blot (1:500-1:2000)
The optimal working dilution should be determined by the end user.

Storage Buffer In ascites (0.03% sodium azide)

Storage Instruction Store at 4°C. For long term storage store at -20°C.
Aliquot to avoid repeated freezing and thawing.

Note

This product contains sodium azide: a POISONOUS AND HAZARDOUS SUBSTANCE which should be handled by trained staff only.

Applications

- Western Blot (Cell lysate)

Western blot analysis using PPP1CA monoclonal antibody, clone 6D1 (Cat # MAB10381) against HeLa (1) and NIH/3T3 (2) cell lysate.

- Enzyme-linked Immunoabsorbent Assay

Gene Info — PPP1CA

Entrez GeneID [5499](#)

Gene Name PPP1CA

Gene Alias MGC15877, MGC1674, PP-1A, PPP1A

Gene Description protein phosphatase 1, catalytic subunit, alpha isoform

Omim ID [176875](#)

Gene Ontology [Hyperlink](#)

Gene Summary The protein encoded by this gene is one of the three catalytic subunits of protein phosphatase 1 (PP1). PP1 is a serine/threonine specific protein phosphatase known to be involved in the regulation of a variety of cellular processes, such as cell division, glycogen metabolism, muscle contractility, protein synthesis, and HIV-1 viral transcription. Increased PP1 activity has been observed in the end stage of heart failure. Studies in both human and mice suggest that PP1 is an important regulator of cardiac function. Mouse studies also suggest that PP1 functions as a suppressor of learning and memory. Three alternatively spliced transcript variants encoding different isoforms have been found for this gene. [provided by RefSeq]

Other Designations protein phosphatase 1, catalytic subunit, alpha|serine/threonine protein phosphatase PP1-alpha 1 catalytic subunit

Pathway

- [Focal adhesion](#)
- [Insulin signaling pathway](#)

- [Long-term potentiation](#)
- [Regulation of actin cytoskeleton](#)
- [Vascular smooth muscle contraction](#)