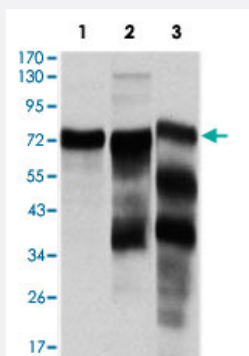


YAP1 monoclonal antibody, clone 1A12

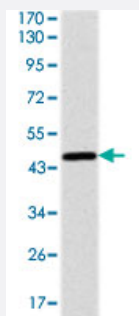
Catalog # MAB10348 Size 100 ug

Applications



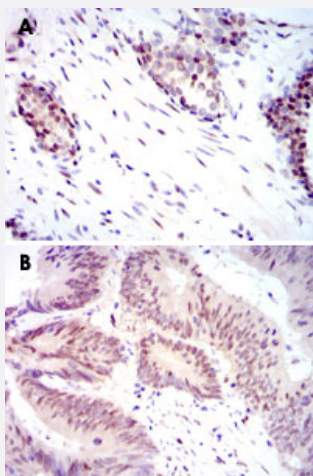
Western Blot (Cell lysate)

Western blot analysis using YAP1 monoclonal antibody, clone 1A12 (Cat # MAB10348) against HeLa (1), C6 (2) and COS-7 (3) cell lysate.



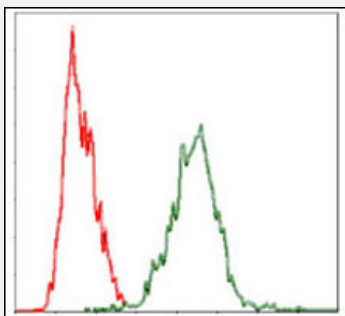
Western Blot (Recombinant protein)

Western blot analysis using YAP1 monoclonal antibody, clone 1A12 (Cat # MAB10348) against recombinant human YAP1 protein.



Immunohistochemistry (Formalin/PFA-fixed paraffin-embedded sections)

Immunohistochemical analysis of paraffin-embedded human prostate cancer tissue (A) and rectum cancer tissue (B) using YAP1 monoclonal antibody, clone 1A12 (Cat # MAB10348) with DAB staining.



Flow Cytometry

Flow cytometric analysis of HeLa cells using YAP1 monoclonal antibody, clone 1A12 (Cat # MAB10348) (green) and negative control (red).

Specification

Product Description	Mouse monoclonal antibody raised against recombinant YAP1.
Immunogen	Recombinant protein corresponding to human YAP1.
Host	Mouse
Reactivity	Human
Form	Liquid
Isotype	IgG1
Recommend Usage	ELISA (1:10000) Western Blot (1:500-1:2000) Immunohistochemistry (1:200-1:1000) Flow cytometry (1:200-1:400) The optimal working dilution should be determined by the end user.
Storage Buffer	In PBS (0.05% sodium azide)
Storage Instruction	Store at 4°C. For long term storage store at -20°C. Aliquot to avoid repeated freezing and thawing.
Note	This product contains sodium azide: a POISONOUS AND HAZARDOUS SUBSTANCE which should be handled by trained staff only.

Applications

● Western Blot (Cell lysate)

Western blot analysis using YAP1 monoclonal antibody, clone 1A12 (Cat # MAB10348) against HeLa (1), C6 (2) and COS-7 (3) cell lysate.

- Western Blot (Recombinant protein)

Western blot analysis using YAP1 monoclonal antibody, clone 1A12 (Cat # MAB10348) against recombinant human YAP1 protein.

- Immunohistochemistry (Formalin/PFA-fixed paraffin-embedded sections)

Immunohistochemical analysis of paraffin-embedded human prostate cancer tissue (A) and rectum cancer tissue (B) using YAP1 monoclonal antibody, clone 1A12 (Cat # MAB10348) with DAB staining.

- Enzyme-linked Immunoabsorbent Assay

- Flow Cytometry

Flow cytometric analysis of HeLa cells using YAP1 monoclonal antibody, clone 1A12 (Cat # MAB10348) (green) and negative control (red).

Gene Info — YAP1

Entrez GeneID	10413
---------------	-----------------------

Gene Name	YAP1
-----------	------

Gene Alias	YAP, YAP2, YAP65, YKI
------------	-----------------------

Gene Description	Yes-associated protein 1, 65kDa
------------------	---------------------------------

Omim ID	606608
---------	------------------------

Gene Ontology	Hyperlink
---------------	---------------------------

Gene Summary	This gene encodes the human ortholog of chicken YAP protein which binds to the SH3 domain of the Yes proto-oncogene product. This protein contains a WW domain that is found in various structural, regulatory and signaling molecules in yeast, nematode, and mammals, and may be involved in protein-protein interaction. [provided by RefSeq]
--------------	--

Other Designations	yes-associated protein 2
--------------------	--------------------------

Disease

- [Tobacco Use Disorder](#)