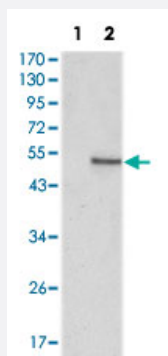


SUZ12 monoclonal antibody, clone 2C11

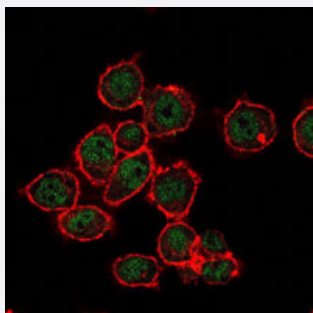
Catalog # MAB10329 Size 100 uL

Applications



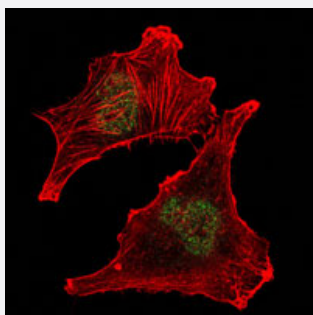
Western Blot (Transfected lysate)

Western blot analysis using SUZ12 monoclonal antibody, clone 2C11 (Cat # MAB10329) against HEK293 (1) and SUZ12-hlgGFc transfected HEK293 (2) cell lysate.



Immunofluorescence

Immunofluorescence analysis of MCF-7 cells using SUZ12 monoclonal antibody, clone 2C11 (Cat # MAB10329) (green). Red: Actin filaments have been labeled with Alexa Fluor-555 phalloidin.



Immunofluorescence

Immunofluorescence analysis of U251 cells using SUZ12 monoclonal antibody, clone 2C11 (Cat # MAB10329) (green). Red: Actin filaments have been labeled with Alexa Fluor-555 phalloidin.

Specification

Product Description

Mouse monoclonal antibody raised against recombinant SUZ12.

Immunogen	Recombinant protein corresponding to human SUZ12.
Host	Mouse
Theoretical MW (kDa)	83.1
Reactivity	Human
Form	Liquid
Isotype	IgG1
Recommend Usage	ELISA (1:10000) Western Blot (1:500-1:2000) Immunofluorescence (1:200-1:1000) The optimal working dilution should be determined by the end user.
Storage Buffer	In ascites (0.03% sodium azide)
Storage Instruction	Store at 4°C. For long term storage store at -20°C. Aliquot to avoid repeated freezing and thawing.
Note	This product contains sodium azide: a POISONOUS AND HAZARDOUS SUBSTANCE which should be handled by trained staff only.

Applications

- Western Blot (Transfected lysate)

Western blot analysis using SUZ12 monoclonal antibody, clone 2C11 (Cat # MAB10329) against HEK293 (1) and SUZ12-hlgGfc transfected HEK293 (2) cell lysate.

- Immunofluorescence

Immunofluorescence analysis of MCF-7 cells using SUZ12 monoclonal antibody, clone 2C11 (Cat # MAB10329) (green). Red: Actin filaments have been labeled with Alexa Fluor-555 phalloidin.

- Immunofluorescence

Immunofluorescence analysis of U251 cells using SUZ12 monoclonal antibody, clone 2C11 (Cat # MAB10329) (green). Red: Actin filaments have been labeled with Alexa Fluor-555 phalloidin.

- Enzyme-linked Immunoabsorbent Assay

Gene Info — SUZ12

Entrez GeneID

[23512](#)

Gene Name	SUZ12
Gene Alias	CHET9, JJAZ1, KIAA0160
Gene Description	suppressor of zeste 12 homolog (Drosophila)
Omim ID	606245
Gene Ontology	Hyperlink
Gene Summary	This zinc finger gene has been identified at the breakpoints of a recurrent chromosomal translocation reported in endometrial stromal sarcoma. Recombination of these breakpoints results in the fusion of this gene and JAZF1. The protein encoded by this gene contains a zinc finger domain in the C terminus of the coding region. [provided by RefSeq]
Other Designations	joined to JAZF1