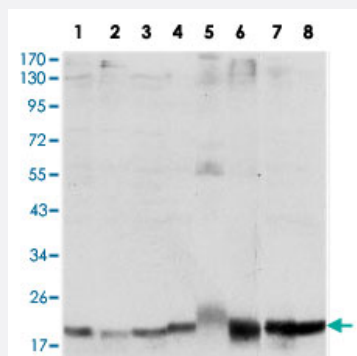


SKP1 monoclonal antibody, clone 4E11

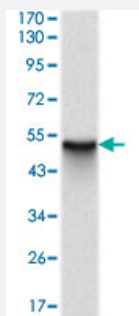
Catalog # MAB10319 Size 100 uL

Applications



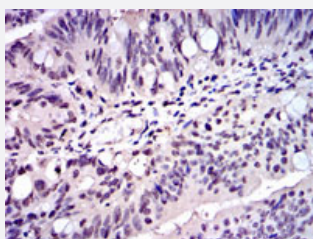
Western Blot (Cell lysate)

Western blot analysis using SKP1 monoclonal antibody, clone 4E11 (Cat # MAB10319) against HeLa (1), NIH/3T3 (2), A-431 (3), RAJI (4), PC-12 (5), COS-7 (6), MCF-7 (7) and HepG2 (8) cell lysate.



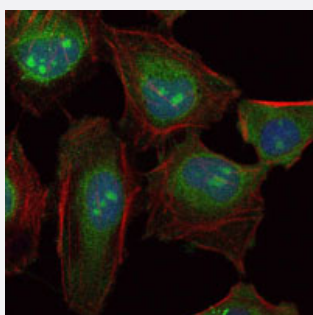
Western Blot (Recombinant protein)

Western blot analysis using SKP1 monoclonal antibody, clone 4E11 (Cat # MAB10319) against recombinant human SKP1 protein.



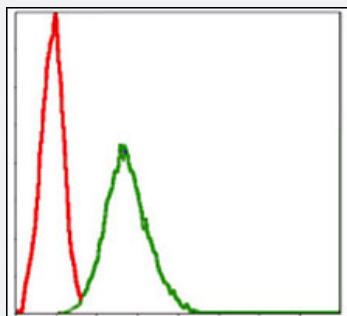
Immunohistochemistry (Formalin/PFA-fixed paraffin-embedded sections)

Immunohistochemical analysis of paraffin-embedded human rectal cancer tissue using SKP1 monoclonal antibody, clone 4E11 (Cat # MAB10319) with DAB staining.



Immunofluorescence

Immunofluorescence analysis of HeLa cells using SKP1 monoclonal antibody, clone 4E11 (Cat # MAB10319) (green). Blue: DRAQ5 fluorescent DNA dye. Red: Actin filaments have been labeled with Alexa Fluor-555 phalloidin.



Flow Cytometry

Flow cytometric analysis of NIH/3T3 cells using SKP1 monoclonal antibody, clone 4E11 (Cat # MAB10319) (green) and negative control (red).

Specification

Product Description	Mouse monoclonal antibody raised against recombinant SKP1.
Immunogen	Recombinant protein corresponding to human SKP1.
Host	Mouse
Theoretical MW (kDa)	19
Reactivity	Human
Form	Liquid
Isotype	IgG1
Recommend Usage	ELISA (1:10000) Western Blot (1:500-1:2000) Immunohistochemistry (1:200-1:1000) Immunofluorescence (1:200-1:1000) Flow cytometry (1:200-1:400) The optimal working dilution should be determined by the end user.
Storage Buffer	In ascites (0.03% sodium azide)
Storage Instruction	Store at 4°C. For long term storage store at -20°C. Aliquot to avoid repeated freezing and thawing.
Note	This product contains sodium azide: a POISONOUS AND HAZARDOUS SUBSTANCE which should be handled by trained staff only.

Applications

- Western Blot (Cell lysate)

Western blot analysis using SKP1 monoclonal antibody, clone 4E11 (Cat # MAB10319) against HeLa (1), NIH/3T3 (2), A-431 (3), RAJI (4), PC-12 (5), COS-7 (6), MCF-7 (7) and HepG2 (8) cell lysate.

- Western Blot (Recombinant protein)

Western blot analysis using SKP1 monoclonal antibody, clone 4E11 (Cat # MAB10319) against recombinant human SKP1 protein.

- Immunohistochemistry (Formalin/PFA-fixed paraffin-embedded sections)

Immunohistochemical analysis of paraffin-embedded human rectal cancer tissue using SKP1 monoclonal antibody, clone 4E11 (Cat # MAB10319) with DAB staining.

- Immunofluorescence

Immunofluorescence analysis of HeLa cells using SKP1 monoclonal antibody, clone 4E11 (Cat # MAB10319) (green). Blue: DRAQ5 fluorescent DNA dye. Red: Actin filaments have been labeled with Alexa Fluor-555 phalloidin.

- Enzyme-linked Immunoabsorbent Assay

- Flow Cytometry

Flow cytometric analysis of NIH/3T3 cells using SKP1 monoclonal antibody, clone 4E11 (Cat # MAB10319) (green) and negative control (red).

Gene Info — SKP1

Entrez GeneID [6500](#)

Gene Name SKP1

Gene Alias EMC19, MGC34403, OCP-II, OCP2, SKP1A, TCEB1L, p19A

Gene Description S-phase kinase-associated protein 1

Omim ID [601434](#)

Gene Ontology [Hyperlink](#)

Gene Summary

This gene encodes a component of SCF complexes, which are composed of this protein, cullin 1, a ring-box protein, and one member of the F-box family of proteins. This protein binds directly to the F-box motif found in F-box proteins. SCF complexes are involved in the regulated ubiquitination of specific protein substrates, which targets them for degradation by the proteasome. Specific F-box proteins recognize different target protein(s), and many specific SCF substrates have been identified including regulators of cell cycle progression and development. Studies have also characterized the protein as an RNA polymerase II elongation factor. Alternative splicing of this gene results in two transcript variants. A related pseudogene has been identified on chromosome 7. [provided by RefSeq]

Other Designations

RNA polymerase II elongation factor-like protein OCP2|cyclin A/CDK2-associated p19|organ of Corti protein 2|transcription elongation factor B (SIII), polypeptide 1-like

Pathway

- [Cell cycle](#)
- [TGF-beta signaling pathway](#)
- [Ubiquitin mediated proteolysis](#)
- [Wnt signaling pathway](#)

Disease

- [Tobacco Use Disorder](#)