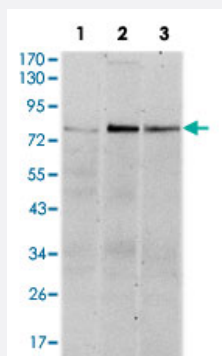


RPS6KA3 monoclonal antibody, clone 4E10

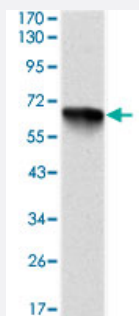
Catalog # MAB10316 Size 100 uL

Applications



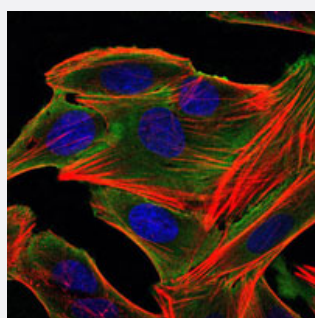
Western Blot (Cell lysate)

Western blot analysis using RPS6KA3 monoclonal antibody, clone 4E10 (Cat # MAB10316) against HeLa (1), MCF-7 (2), and HepG2 (3) cell lysate.



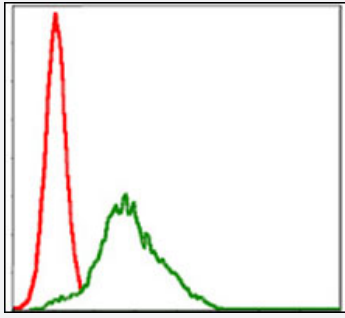
Western Blot (Recombinant protein)

Western blot analysis using RPS6KA3 monoclonal antibody, clone 4E10 (Cat # MAB10316) against recombinant human RPS6KA3 protein.



Immunofluorescence

Immunofluorescence analysis of HepG2 cells using RPS6KA3 monoclonal antibody, clone 4E10 (Cat # MAB10316) (green). Blue: DRAQ5 fluorescent DNA dye. Red: Actin filaments have been labeled with Alexa Fluor-555 phalloidin.



Flow Cytometry

Flow cytometric analysis of HepG2 cells using RPS6KA3 monoclonal antibody, clone 4E10 (Cat # MAB10316) (green) and negative control (red).

Specification

Product Description	Mouse monoclonal antibody raised against recombinant RPS6KA3.
Immunogen	Recombinant protein corresponding to human RPS6KA3.
Host	Mouse
Theoretical MW (kDa)	80
Reactivity	Human
Form	Liquid
Isotype	IgG1
Recommend Usage	ELISA (1:10000) Western Blot (1:500-1:2000) Immunofluorescence (1:200-1:1000) Flow cytometry (1:200-1:400) The optimal working dilution should be determined by the end user.
Storage Buffer	In ascites (0.03% sodium azide)
Storage Instruction	Store at 4°C. For long term storage store at -20°C. Aliquot to avoid repeated freezing and thawing.
Note	This product contains sodium azide: a POISONOUS AND HAZARDOUS SUBSTANCE which should be handled by trained staff only.

Applications

- Western Blot (Cell lysate)

Western blot analysis using RPS6KA3 monoclonal antibody, clone 4E10 (Cat # MAB10316) against HeLa (1), MCF-7 (2), and HepG2 (3) cell lysate.

- Western Blot (Recombinant protein)

Western blot analysis using RPS6KA3 monoclonal antibody, clone 4E10 (Cat # MAB10316) against recombinant human RPS6KA3 protein.

- Immunofluorescence

Immunofluorescence analysis of HepG2 cells using RPS6KA3 monoclonal antibody, clone 4E10 (Cat # MAB10316) (green). Blue: DRAQ5 fluorescent DNA dye. Red: Actin filaments have been labeled with Alexa Fluor-555 phalloidin.

- Enzyme-linked Immunoabsorbent Assay

- Flow Cytometry

Flow cytometric analysis of HepG2 cells using RPS6KA3 monoclonal antibody, clone 4E10 (Cat # MAB10316) (green) and negative control (red).

Gene Info — RPS6KA3

Entrez GeneID	6197
Gene Name	RPS6KA3
Gene Alias	CLS, HU-3, ISPK-1, MAPKAPK1B, MRX19, RSK, RSK2, S6K-alpha3, p90-RSK2, pp90RSK2
Gene Description	ribosomal protein S6 kinase, 90kDa, polypeptide 3
Omim ID	300075 303600
Gene Ontology	Hyperlink
Gene Summary	This gene encodes a member of the RSK (ribosomal S6 kinase) family of serine/threonine kinase s. This kinase contains 2 non-identical kinase catalytic domains and phosphorylates various subst rates, including members of the mitogen-activated kinase (MAPK) signalling pathway. The activity of this protein has been implicated in controlling cell growth and differentiation. Mutations in this g ene have been associated with Coffin-Lowry syndrome (CLS). [provided by RefSeq
Other Designations	OTTHUMP00000023036 insulin-stimulated protein kinase 1 mental retardation, X-linked 19 ribos omal protein S6 kinase, 90kD, polypeptide 3

Pathway

- [Long-term potentiation](#)
- [MAPK signaling pathway](#)
- [mTOR signaling pathway](#)
- [Neurotrophin signaling pathway](#)

Disease

- [Head and Neck Neoplasms](#)
- [Neoplasm Recurrence](#)
- [Neoplasms](#)